

COLUMBUS SQUARE PARK MASTER PLAN
KANSAS CITY, MISSOURI PARKS AND RECREATION
JULY 15, 2014

LOCATION OF THE PARK: Between Independence Ave. and Missouri Ave. and between Charlotte and Holmes, north of I-35 / 70 HIGHWAY

HISTORY OF THE PARK:

1908 – North half of current Park was developed as Washington Square Park. Karnes School occupied the south half of current park space.

1910-1911 - Kessler designed the master plan for the original park improvements on the north half.

1967 – 1972 - the Park was renovated with a new plan, completely changing the Kessler plan to reflect the style of the time.

1980s – Karnes School torn down and the south property was added to the park; the road between was vacated.

1980s – 1990s - Various improvements were constructed, including asphalt walks, wood framed bocce courts, and later the gazebo shelter and current play area.

CURRENT CONDITIONS

The sidewalks are cracked, broken; walks, ramp and stairs within park do not meet ADA standards. Access into the park is impeded by poor sidewalks.

Mature / declining trees – including AUSTRIAN PINES, ASH, SIBERIAN ELM and others.

The bocce courts are in poor condition, also not meeting ADA or game standards.

Memorial garden at east entrance, dedicated to a neighborhood leader, needs restoration.

The park is very hot in summer, very exposed to the freeway and winds.

The gazebo needs to be painted.

A granite paver fountain has not operated in many years and needs to be removed.

The play area is about 14 years old and will need upgrading soon.

The park is heavily used by neighbors sitting and chatting, and by walkers, including some from downtown.

The sidewalk on Independence is immediately next to the curb, and goes nowhere except into the park's west edge.

MASTER PLAN ELEMENTS
BASED ON NEIGHBORHOOD INPUT / GOALS ESTABLISHED FOR THE PARK RENOVATIONS

1. IMPROVE CIRCULATION / ACCESSIBILITY:

Re-design park entrances
Re-grade and reconstruct entire path system

2. NEW BOCCE COURTS:

Reconstruct BOCCE COURTS, closer to the center of the park

3. & 4. CREATE A SHELTER & GATHERING SPACE; CREATE MORE SHADED SITTING AREAS:

Construct a METAL SHADE ARBOR, with picnic tables and/or benches, to create a gathering space for events and provide shade for the bocce court area
Place additional benches throughout the park

5. IMPROVE PICNIC AREA:

Create PICNIC GROVE west of the bocce courts

6. CREATE LARGER OPEN SPACE AREAS:

Relocate walks to preserve larger uninterrupted grassy areas for un-programmed play and events.

7. ADD NEW TREES, REVITALIZE LAWNS:

Plant a wide variety of trees over several years to re-establish canopy
All healthy existing trees will remain
Add new topsoil and compost seeding to revitalize lawns

8. INCLUDE OPTION FOR RESTORING THE MEMORIAL GARDEN THAT USED TO BE AT THE CHARLOTTE ENTRY.

Optional garden border along 'main' entry walk

9. ADD MORE DRINKING FOUNTAINS:

Add two new drinking fountains and relocate one existing

10. CELEBRATE THE HISTORY OF THE KARNES SCHOOL AND THE PARK

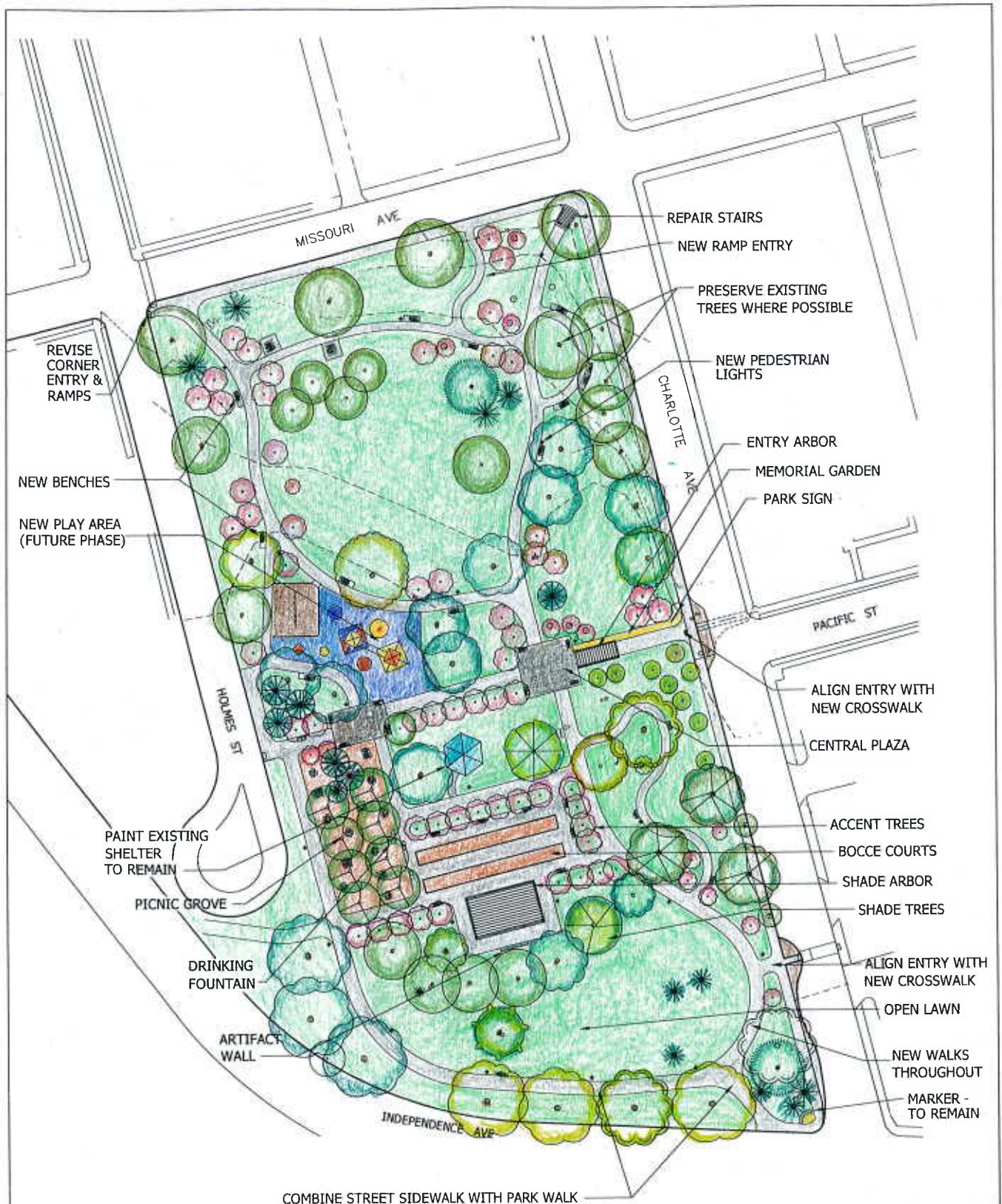
Create "artifact wall" near the shade arbor, with letters from Karnes School & granite pavers from the non-operating fountain

11. REPLACE PLAY AREA

New play area to replace existing, in a later phase

12. IMPROVE LIGHTING IN SHELTER AND THROUGHOUT PARK

New LED lights added to the existing gazebo
New LED Pedestrian Lights will be added throughout the park



COLUMBUS SQUARE

PARK MASTER PLAN

KANSAS CITY, MO BOARD OF PARKS & RECREATION COMMISSIONERS

MAY 16, 2014

