

# master plan **hodge park**

Board of Parks & Recreation  
Commissioners  
Kansas City, Missouri



## **LAND3 Studio L.L.C.**

Bob G Bushyhead .....

Michael H Malyn .....

Brian D Roth .....

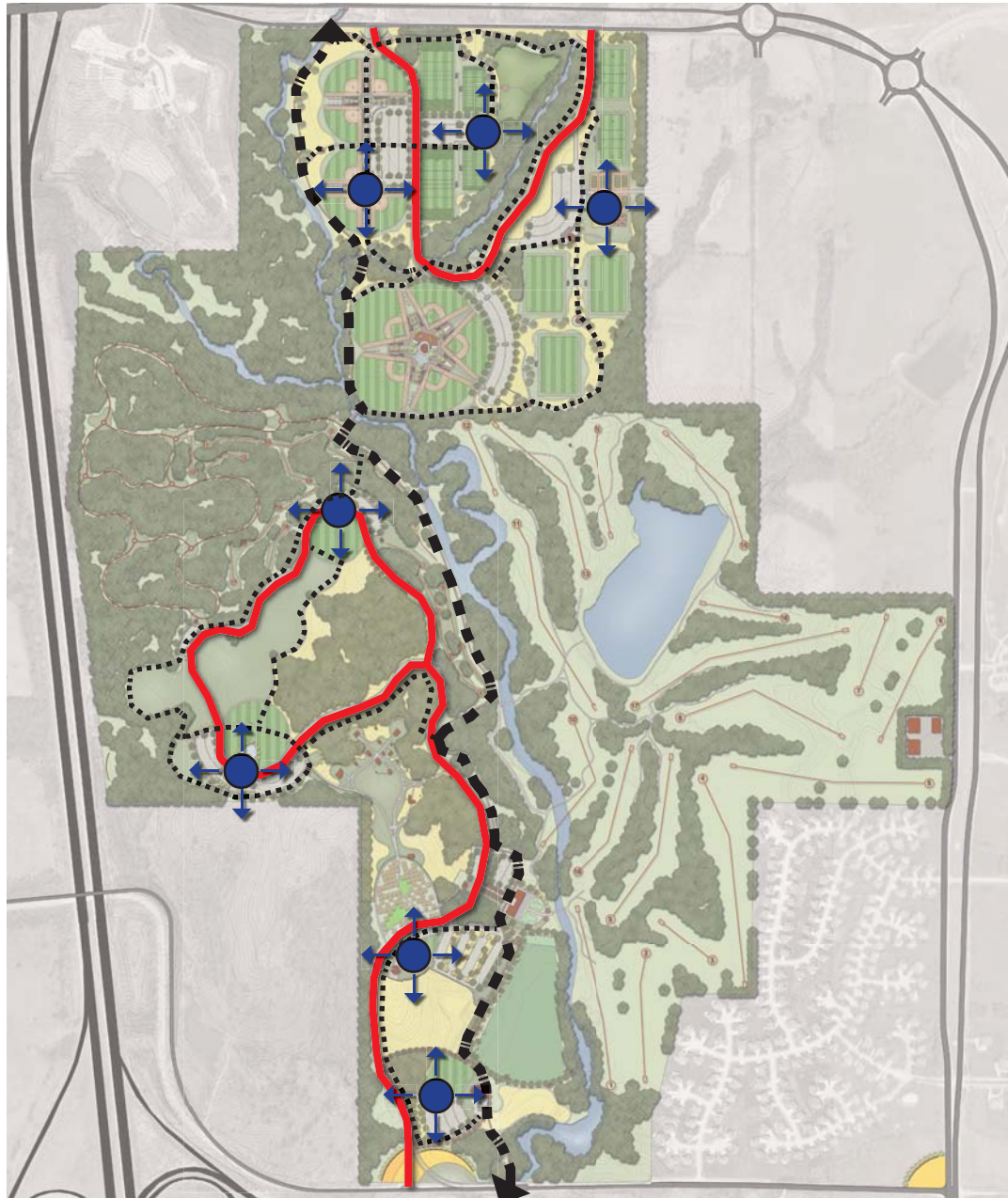
Brian K Burmeister



# Current Park Program



# Circulation Program



## Circulation Program

### Vehicle Circulation & Access

- Enhance Profile by gaining access
- Increase Operational Efficiency
- Access offers Security Control
- Allows for Increased Program



### Community Nodes

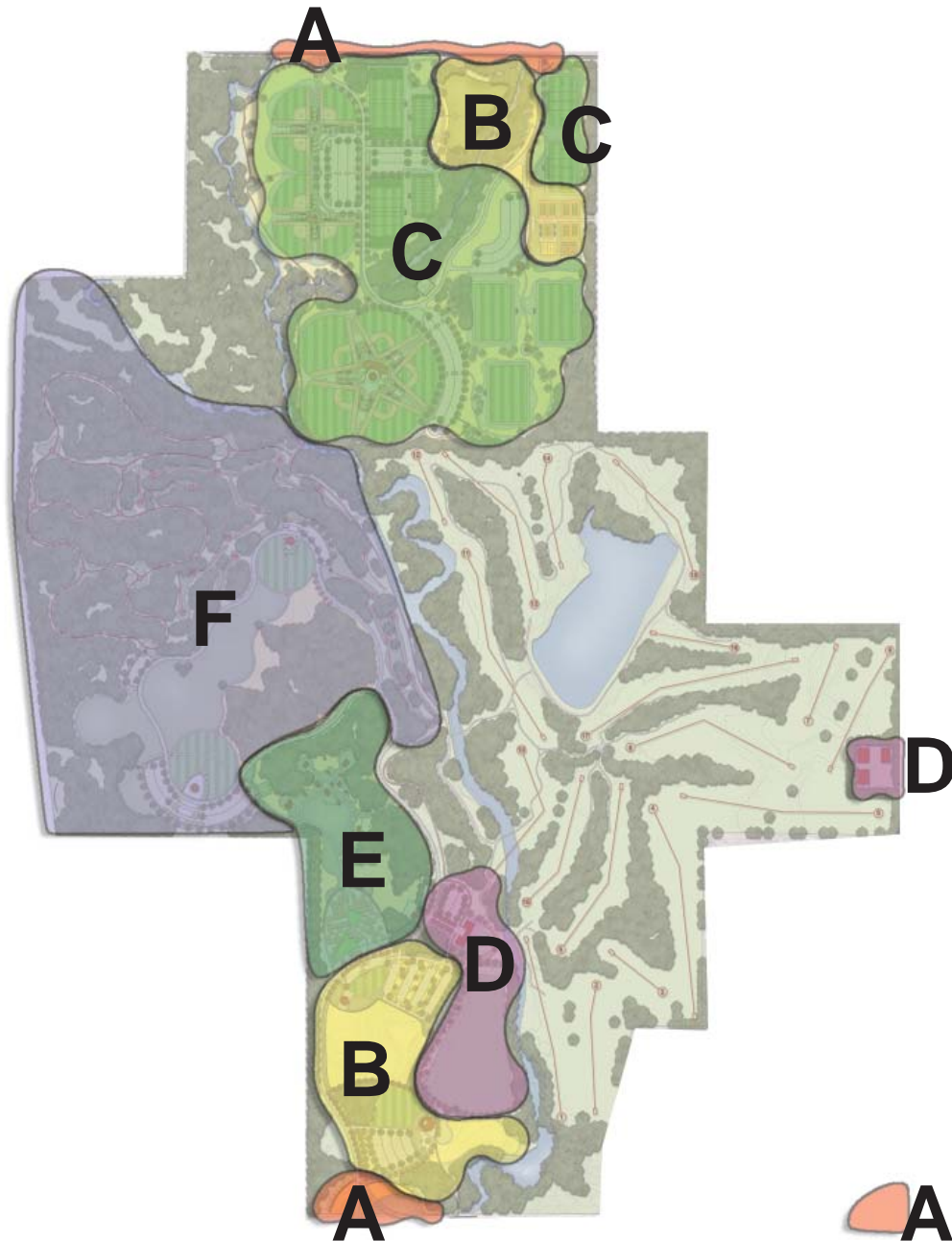
- Enhance Profile by gaining access
- Increased program
- Balance: more community level programs



### Trails

- Enhance Profile by gaining access
- Increase Operational Efficiency through access
- Access offers Security Control
- Increase Program: locally & regionally

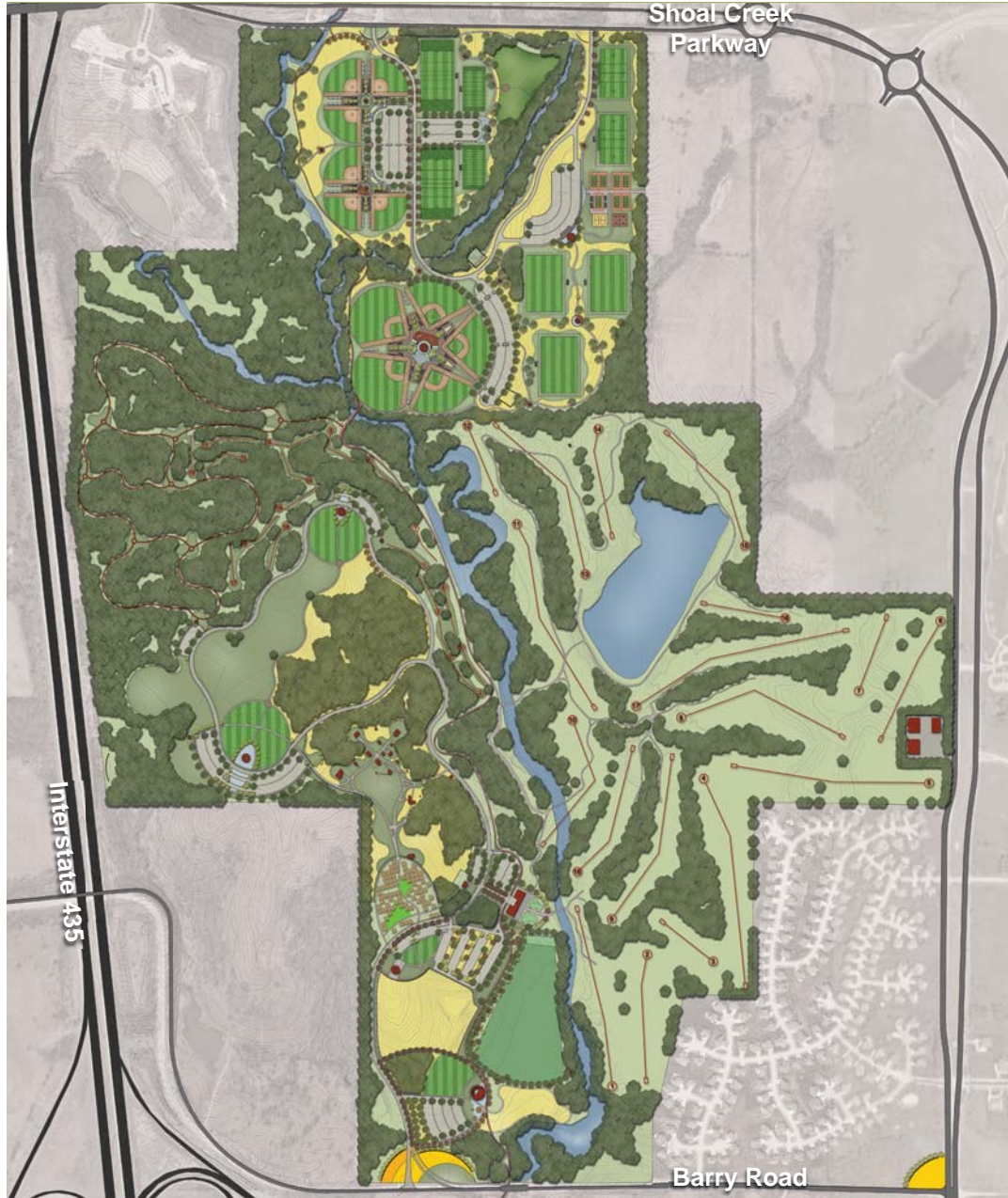
# Master Plan Zones



## Master Plan Activity Zones

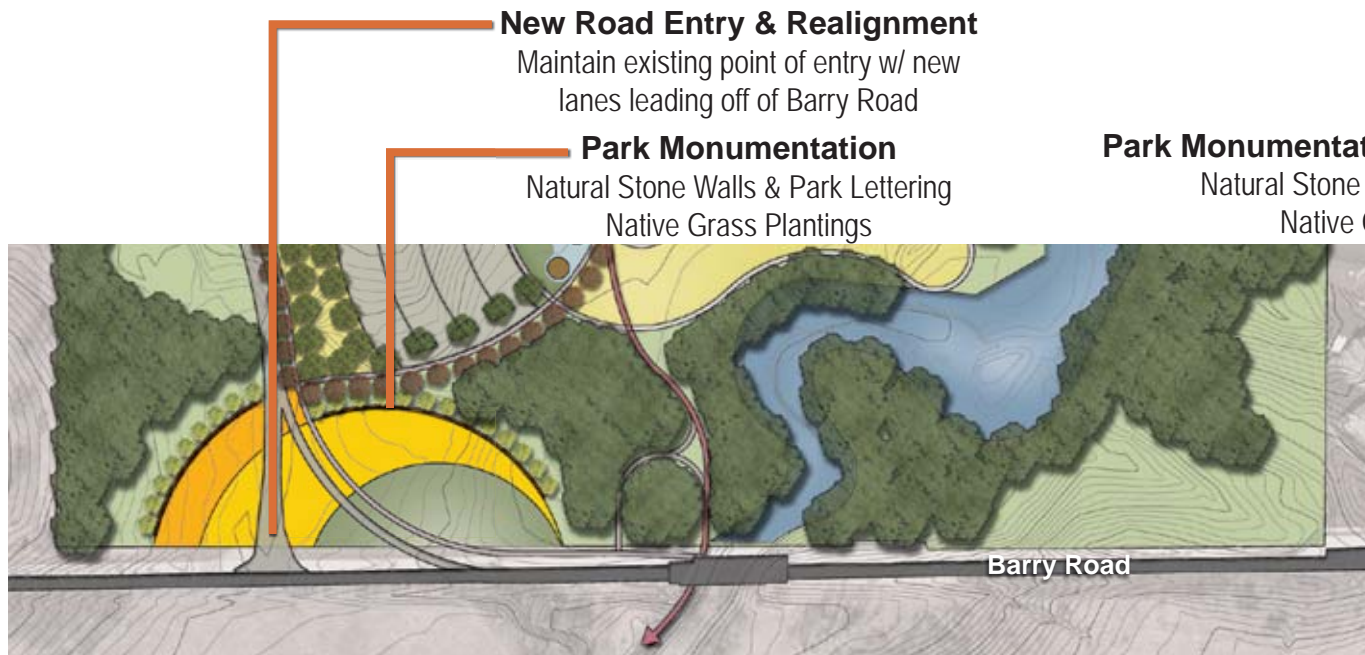
- A – Site Entries
- B – Community Scale Parks
- C – Athletic Field Complex
- D – Golf Course Facilities
- E – Living History Museum
- F – Nature Activity Area

# Overall Master Plan



Overall Master Plan

# Master Plan - Site Entries



**Park Monumentation (Shoal Creek Pkwy)**  
Natural Stone Walls & Park Lettering  
Native Grass Plantings



# Master Plan - Community Scale Parks



## Master Plan - Community Scale Parks

### Dog Park

- Separate Small & Large Dog Areas
- Perimeter & Internal Metal Fencing
- Hard Surface Gathering Area w/ Shade Feature
- Water connection & drinking fountain

### Athletic Court Area

- Playground & Trail Links to adjacent properties
- (7) Tennis Courts
- (2) Basketball Courts
- (2) Sand Volleyball Courts



# Master Plan - Community Scale Parks

## Master Plan - Community Scale Parks



### Buffalo Overlook Park

- Iconic park shelter
- Existing parking lot expansion
- Open Space & Playground
- Stone overlook wall

### Relocate Buffalo Enclosure

- New perimeter fencing
- Maintain access to existing pond

### Amphitheatre Park

- Reprogram for community scale needs
- Dedicated 80-100 parking stalls
- Natural planting buffer along entry drive
- Destination natural play area
- Nature Trails along creek
- Regional and internal trail head

### Entry Drive Re-Alignment

- Move entry road west
- Minimizes driving range conflicts



# Master Plan - Athletic Field Complex



## Master Plan - Athletic Field Complex

overall description

### North Complex

- (6) Softball; 225', all ages
- (2) Rugby; all ages
- (2) Football; 150'x300', K-8

### South Complex

- (2) Baseball; 400', age 15 +
- (3) Baseball; 300', age 13-14

### East Complex

- (2) Lacrosse; all ages
- (4) Multi-Purpose

### Amenity Area

- Concession/Restrooms
- Playground
- Shelters & Seating

### Trails

- 6-8' wide
- Amenity Nodes



# Master Plan - Golf Course Facilities



## Master Plan - Golf Course Facilities

### Golf Clubhouse

- New clubhouse
- Integrate basement cart storage.
- New entry drive & drop-off
- New parking lot

### Golf Practice Facilities

- New putting/chipping green(s)
- Formal leisure area
- Expand golf practice tees
- Driving range safety buffer

### Golf Maintenance Facility

- New golf maintenance facility
- Remove existing golf maintenance



# Master Plan - Living History Museum



## Master Plan - Living History Museum

### Secondary Entry

New dedicated parking lot  
Entry structure w/ ticket booth  
Ornamental fencing & gates

### Pathway upgrades

New primary circulation walks  
New shelters and seating areas

### Perimeter Buffers

Maintain exist vegetation buffer

### Harvest Park

Community Gardens Plots  
Demonstration Garden Areas  
Small Crop Fields

### New Main Entrance

Integrated into Harvest Park  
New dedicated parking lot  
Ornamental entry fencing & gates  
Entry structure with ticket booth  
New Monument signage  
New secondary entry



# Master Plan - Natural Recreation Area



## Master Plan - Natural Recreation Area



### Mountain Bike Trails

- Dedicated parking lot
- Trail Head: Bike racks, drinking fountain  
trail map & seating
- Park shelter

### Disc Golf Course

- Dedicated parking lot
- Drinking fountains
- Course map display
- Park shelter
- Regulation Disc Golf Course

### “Central Fields”

- Native shortgrass fields
- Perimeter concrete trails
- Formal multi-use lawn
- Re-enactment area
- Shelters & Seating

### Monument Signage

- I-435 monument sign
- Themed materials

# Master Plan - Image & Character

## Master Plan - Image & Character



civil war



traditional materials



pioneering



native



bis on



grass lands