



Hodge Park Improvements

Project Address: At the intersection of NE Shoal Creek Parkway and N. Reinking Road, Council District 1

Project Scope: The project includes paving the existing gravel trail that runs north-south through the park; constructing two multipurpose fields for football, soccer, rugby, and lacrosse; parking lot improvements including lighting, and constructing a destination playground with decorative fencing and shelter. Final completion date of March 31, 2020.

Design Professional: George Butler and Associates and Land3 Studio

Construction Contractor: Blue Moon Hauling and Excavation, LLC. – Base Bid and two alternates awarded in the amount of \$2,654,000.00. Playground contractor is ABCreative in the amount of \$833,937.54

KC Parks Project Manager: Rodney Riffle

Total Funds for Project: \$4,080,000

Shoal Creek TIF funds in the amount of \$3,720,000

CD1 PIAC funds in the amount of \$360,000

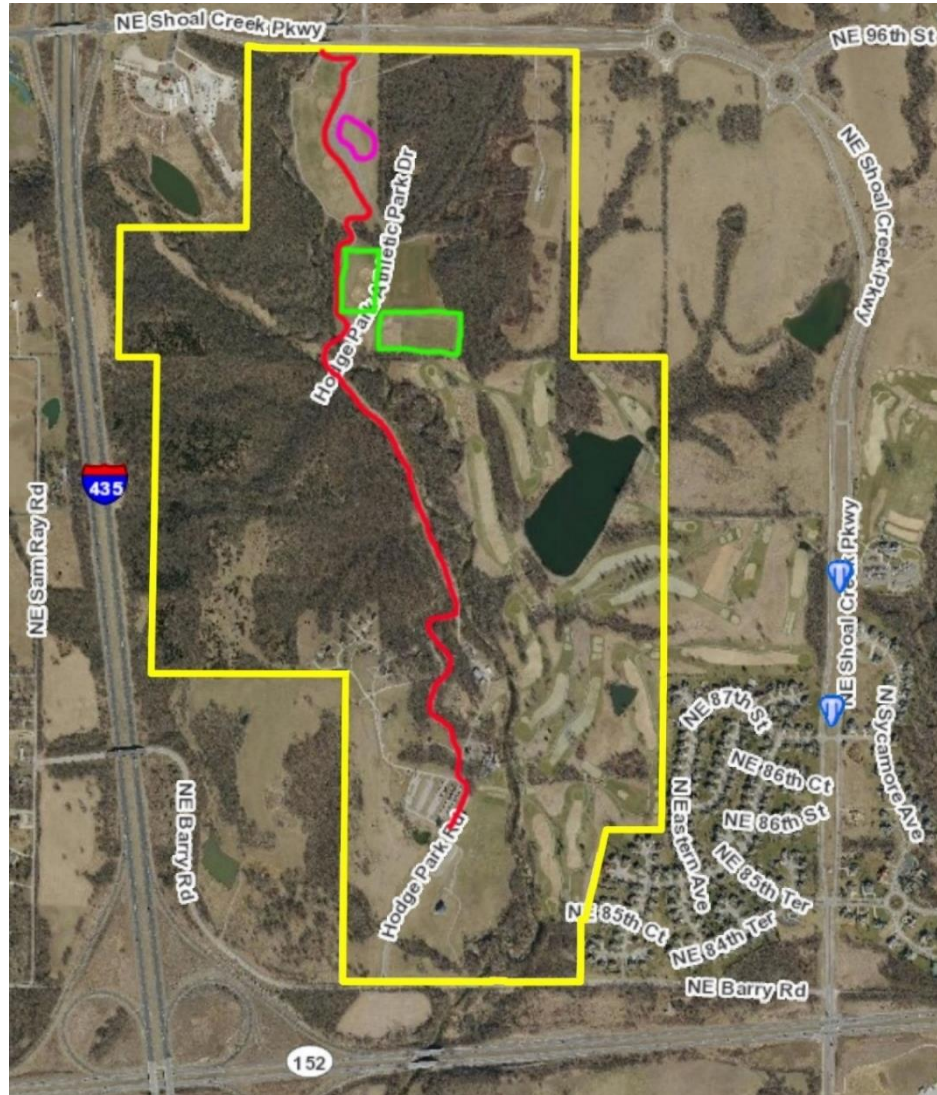
Project Status: 95% Complete

CO#1: Change Order #1 increased the contract amount by \$193,261.80 for a total contract price of \$2,847,261.80. The change order was for additional topsoil, rock base, concrete curb, construction fencing (to keep the existing rugby field open), stream bank stabilization, and reduction of concrete trail and sidewalk.

CO#2: Change Order #2 added 124 days to the schedule because of the extreme weather conditions experienced this past winter and spring. No increase to the contract amount.

CO#3: Change Order #3 increases the contract amount by \$100,862.10 for a total contract price of \$2,948,123.90. The change order is for additional electrical work for the parking lot lighting, playground equipment delivery, and resurfacing the existing parking lot. The final completion date will become March 31, 2020 because of the need for warmer weather for the asphalt paving.

Project Location



Hodge Park Improvements

North End Master Plan



MASTER PLAN LEGEND

- (A) Destination playground
 - Multi-generational play
 - Artificial Turf surface
 - Shade structures (2)
- (B) Existing Rugby Field
 - Surface re-grading
 - New grass surface
- (C) New Multipurpose Field
 - Surface re-grading
 - New grass surface
- (D) New Multipurpose Field
 - Demo existing backstops
 - Re-grading
 - New grass surface
 - Sod
- (E) Trail
 - New Concrete surface
- (F) New Parking Lot
- (G) New Picnic Shelter

Construction begins
September 2018

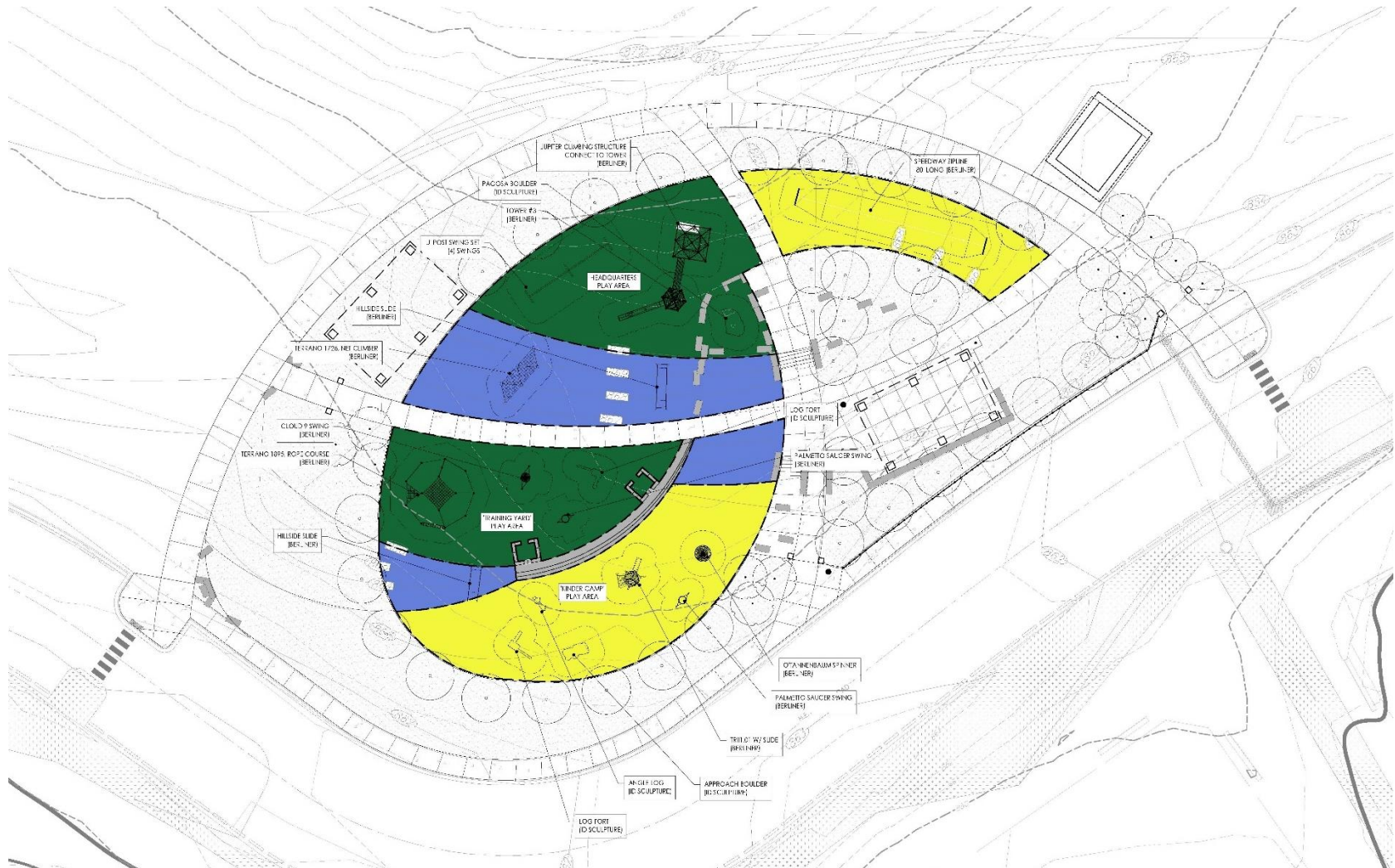
Scheduled completion
in Spring of 2019



HODGE PARK PLAYGROUND AND RENOVATIONS



Destination Playground



Completed trail south of the ped bridge



Large multipurpose field



Spectator seating pad at large field



Small multipurpose field



New, lighted parking lot



New shelter at playground



New play elements for older kids



New play elements for younger kids



Hodge Park



we design the future

PROPOSED SITE PLAN

North Kansas City School District