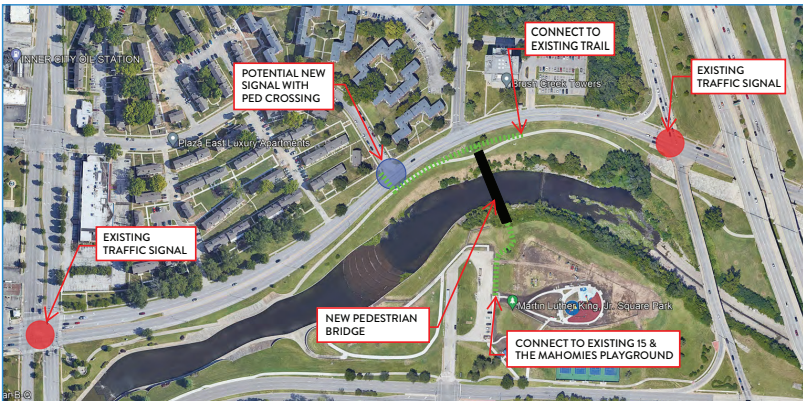


MARTIN LUTHER KING JR. Pedestrian Bridge

Join us to **share your input on design concepts** for the Martin Luther King Jr. Pedestrian Bridge! The KC Parks Department and design contractor will present bridge design concepts at the public meeting.

May 2, 2024 | 6-7:30 p.m.

**Mary Williams Neal Community Center
3801 Emanuel Cleaver II Blvd., Kansas City, MO 64130**



The new MLK Pedestrian Bridge will be built on the south side of Emanuel Cleaver II Boulevard directly across from Woodland Avenue.

Questions

Contact Schylon Kubic, schylon@parsonkc.com or 816-601-1667



Scan QR code

Stay Connected

Sign Up! Share your contact info to receive project updates and information on public engagement opportunities.



Taliaferro & Browne, Inc.