



[kcmo.org/parks](http://kcmo.org/parks)

Kansas City, Missouri Parks and Recreation  
Year **2008** In Review



**Kansas City, Missouri Parks and Recreation**  
4600 East 63rd Street  
Kansas City, Missouri 64130  
816-513-7500



## Mission

*To improve the quality of life by providing recreational, leisure, and aesthetic opportunities for all citizens, and by conserving and enhancing the environment.*

*We will accomplish this mission by providing quality programming, making the best use of existing resources, developing a supportive and influential constituency, developing effective collaborations and partnerships, and acquiring and preserving natural features.*

## From the Director

Dear Friends of Parks and Recreation:

I am proud of our accomplishments in 2008. The year was not without its challenges, but our department persevered, and as you will read in this report, produced some great results.

The Board of Parks and Recreation Commissioners has developed five Strategic Priorities that serve as our guide in everything we do. They include youth development and our role in "building better kids"; green solutions as a part of planning and development process for all projects; financial sustainability to ensure equal resources for the entire community; developing plans, strategies and work procedures to increase economic achievement for MBE/WBE companies; and marketing our programs and services. In 2008, these priorities led to two major developments—the new KC Parks brand and the formation of the Youth Development Task Force.

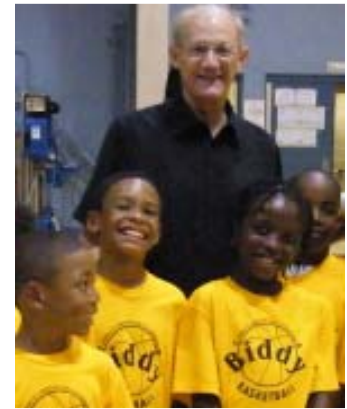
In July, we launched a new image campaign and introduced a new KC Parks branding logo. The green ball design was created in partnership with the Kansas City Area Development Council and modeled after their red ball, "One KC" campaign and concept. The marketing division implemented a campaign to internally and externally re-brand, increase visibility and awareness, and enhance the image of Kansas City Parks. The new brand and co-branding tools were introduced to our Parks Partners in October.

The Youth Development Task Force, a joint initiative between the Office of the Mayor and Board of Parks and Recreation Commissioners, convened early in the year to focus on enhancing internal collaboration and resource sharing. Anticipated outcomes from the group include repositioning youth and family services as a basic and essential city function; better coordination, external communication and marketing of services and programs; and developing a volunteer component to support the efforts of current and future programs.

Additional highlights of the year include the appointment of Meghan Badwey Conger as a Commissioner to the Parks Board, continuing to strengthen our green initiatives, the closing of Cliff Drive for Car Free Weekends and the opening of the new Southeast Community Center in Swope Park.

I appreciate the service of the Board of Parks and Recreation Commissioners. I applaud the hundreds of volunteers that assist us and the many Parks Partners that allow us to succeed. Together with our staff, we achieve our vision of healthier citizens, a desirable community and a sustainable environment.

Mark L. McHenry, *Director*



Relax • Laugh • Picnic • Learn • Explore • Golf • Discover • Unwind • Enjoy • Play • Swim • Fish

# 2008

## Special Events, Groundbreakings and Dedications

January 18  
Commissioners' Awards Dinner



January 31  
Zoo Tropics Building Groundbreaking



February 8  
USTA Recreational Coaches Workshop

February 16  
Mayor's Night Hoops Winter Tip Off

February 23  
The Black West in Song and Story



February 29  
Black History Month Program & Heritage Stamp Unveiling



March 1  
Ethnic Enrichment Commission Ball

March 15  
Snake Saturday and Warm-Up Parades

# Car Free Weekends on Cliff Drive



On May 16, the gates of Cliff Drive officially closed to vehicular traffic for the first time as part of the new Car Free Weekends program. The gates continued to close every Friday at 2:00pm and were reopened at 8:00am each Monday through October.

The Car Free Weekends program was implemented to provide safe opportunities for pedestrian and bicycle-oriented activities that promote healthy lifestyles for all to enjoy. In addition, the reduction of vehicular traffic helps preserve the natural environment that is unique to Kessler Park and Cliff Drive. Cliff Drive is located in George E. Kessler Park in historic Northeast Kansas City and is part of the Kansas City, Missouri Park and Boulevard System. Cliff Drive is officially designated a State Scenic Byway, one of only five in the state of Missouri. The byway extends approximately 4.27 miles from The Paseo and Independence Avenue through Indian Mound on Gladstone Boulevard and Belmont Boulevard.

Several organizations worked in partnership with Parks and Recreation to develop the Car Free Weekends program including the Cliff Drive Corridor Management Committee, Scarritt Renaissance Neighborhood Association, Kansas City Museum, Westside Housing, City of Kansas City, Missouri, and the KCMO Police Department.

# Playground Construction Package



June 10 marked the ribbon cutting and dedication for the single largest playground construction project in the 116-year history of Kansas City, Missouri Parks and Recreation. Mayor Mark Funkhouser joined the Board for the "completion of construction celebration" at Spring Valley Park playground, one of 17 new playgrounds erected throughout the city.

In August of 2007, Parks and Recreation joined forces with the City's Procurement Services to begin the proposal process for a Playground Replacement Program. After careful review of those proposals, Cunningham Associates Incorporated was selected and the \$1.2 million playground construction project began. Money from general obligation bonds, approved by voters in 2004, funded the program.

Additional new playgrounds include: Northeast Athletic Fields, Essex Park, Waterwell Athletic Complex, North Congress Greenway, Prospect Plaza Park, Lykins Park, Spring Valley Park, Indiana Park, Blues Park, Cypress Park, The Grove Park, Gage Park, Arletta Park, Swope Park, Skiles Park, Iser Park, and Dunn Park.

All of these new playgrounds offer fitness, socialization and recreational opportunities and are designed and appropriate for children ages 2-12.

**march 17**  
St. Patrick's Day Parade



**march 27-30**  
Flower, Lawn & Garden/Home Show



**april 1**  
Fountain Day

**april 5**  
Project Blue River Rescue

**april 5, 18, 23, 25, 26, 30**  
Arbor Day Events



**april 14**  
Grand Boulevard of the Americas Dedication

**april 19**  
Earth Day Celebration



**april 26-27**  
Chalk Walk on the Concourse

**april 27**  
Budd Park Bike Rodeo



**april 30**  
NSCD Soccer AbilityCAMP



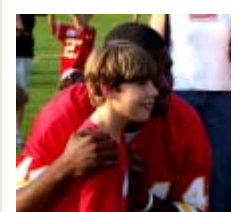
**may 2**  
Theis Park Rain Garden Dedication

**may 3**  
Zoo Front Entry Plaza Grand Opening

**may 3**  
Tennis Block Party at Barry Park



**may 3-october 11**  
KC Organics and Natural Market Open



**may 6**  
NSCD Football AbilityCAMP

**may 9-11**  
Fiesta Kansas City in the Heartland

# Northland Fountain 25th Anniversary



**D**edicated in 1983, the first fountain to be built north of the Missouri River was the result of an enormous grassroots campaign. Donations to raise the \$250,000 needed to build the fountain varied wildly—from schoolchildren’s pennies to tens of thousands of dollars from area businesses. The combined fundraising effort led to the fountain being called the “Spirit of Cooperation.”

On June 21, many of the original supporters came together in celebration of the 25th Anniversary of the fountain for a “Taste of the Northland”. Restaurants and caterers showcased their fares as attendees mixed and mingled around the Northland icon.

The fountain is made up of a large reflecting pool 80 feet in diameter. Multiple jets make up the water feature of the fountain. The central water jet shoots water approximately 30 feet into the air, where it disperses in a fine mist. A ring of jets surround the central jet and shoot water outwards. Other jets along the exterior shoot water inwards.

The fountain was the first in the city designed and built to run year-round, creating breathtaking ice sculptures during the winter months, making it one of the most popular fountains in the city.

# Tree Camp at Loose Park



**M**ore than 100 local youth were “explorers for a day” as participants in the second annual Tree Camp held in June at Loose Park. The Tree Camp is a joint program of the Garden Center Association and Kansas City Parks and Recreation and was created for children attending summer camps at four of the department’s community centers. Campers experienced a day of exploration in the Stanley R. McLane Arboretum in Loose Park, enhancing their understanding of nature, particularly trees. The youth, ages 5-14, had fun using skills of leadership and team building in an atmosphere that encouraged exploration, creativity and individuality.

Campers utilized *Explorers Field Guides*, developed by Garden Center Association members, that included two courses of discovery created to open up the wonderful and extensive collection of native trees in the arboretum. The “Lake Course” leads on a path of discovery around the park’s lagoon to 12 different species of trees with activities to do with each. The “Champion Tree Compass Course” leads explorers all over the park using an orienteering compass. Compass bearings lead to eight of the eleven Champion Trees located in the park. A Champion Tree is the largest of its species in a particular area, in this case, Kansas City, Missouri.

Funding is currently being sought to expand Tree Camp to summer camp attendees at all of the department’s community centers in 2009.

**may 9-11**  
USTA Central  
Regional Doubles  
Tennis Tournament



**may 13**  
Bea Davis Mall &  
Pergola Dedication

**may 16**  
Cliff Drive Car Free  
Weekends Kick Off



**may 16**  
Bubble Klice Bust  
Dedication

**may 17**  
The Klice Classic



**may 17-18**  
Stand of Colors at  
Jerry Smith Farm

**may 24**  
Elizabeth Duncan  
Porter Marker  
Dedication

**may 24-26**  
Jiggle Jam Festival



**may 26**  
Memorial Day at  
Liberty Memorial



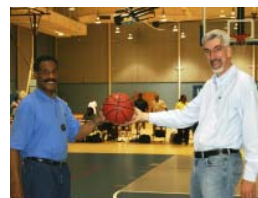
**may 31**  
NSCD Baseball  
AbilityCAMP

**June 1**  
Rose Day at Loose  
Park Garden Center



**June 1**  
Cancer Survivors  
Rally & Park  
Rededication

**June 7**  
National Trails Day



**June 7**  
Mayor’s Night Hoops  
Summer Tip Off

**June 10**  
Playground  
Dedications

## Mayor's Night Kicks

## Southeast Community Center in Swope Park



**K**ansas City Parks and Recreation together with the Mayor's Office, the Kansas City Wizards and ownership group OnGoal, LLC, officially kicked-off the inaugural Mayor's Night Kicks Tournament on July 8. With Hispanic, Somalian and American players, the Kansas City Cup Tournament truly celebrated the international flavor of Kansas City.

The six-week evening soccer tournament for adult males ages 18-25 took place on Field 3 of the Wizards Training Center in Swope Park. Games were played on Wednesday, Thursday, Friday and Sunday nights at 8:00pm and 10:00pm and consisted of two 45-minute halves with a 15-minute halftime. Similar to the World Cup format, the 16 teams were divided into four groups of four teams. The first round allowed for each team to play the other three teams in their group. Week four found the top two teams in each group advancing to play in the quarter-finals where they played in a single elimination bracket. Week five hosted the two semi-final games; the third place and championship games were played on August 22 and broadcast on MetroSports.

The top three teams including the Kansas City Cup winners, CD Honduras, were awarded medals and introduced at halftime during the Kansas City Wizards home game on August 23 at Community American Ballpark.

**T**he highly anticipated new Southeast Community Center in Swope Park officially opened its doors for business on December 13. The grand opening celebration culminated with a ribbon cutting led by the Mayor, City Council, City Manager and Board of Parks and Recreation Commissioners. Equipment and class demonstrations, family activities and tours took place throughout the day. KCWE Channel 29 hosted a Free Swim Pool Party in the afternoon and the day concluded with a Santa's Wonderland.

The new center, located a few blocks east of the former center in the north part of Swope Park, includes a full-sized basketball court, meeting rooms, a tot drop-off room, craft room, therapy pool, recreation pool with play features and fitness area with weights and cardiovascular equipment. A variety of aerobics, fitness and craft classes are offered, and a 1/15-mile suspended track is installed above the gym so members can walk or run in year-round comfort.

The Southeast Community Center in Swope Park is 46,755 square feet with a capacity of 1,566 people. The environmentally-friendly facility includes a rain garden to capture stormwater runoff and features a 1% for Art Installation, *Inheritance*, by local artists Julia Cole and Leigh Rosser.

**June 13-14**  
Rhythm & Ribs

**June 14**  
Urban American  
Outdoors Kids  
Fishing Derby

**June 14**  
Little Joe Concert at  
Tony Aguirre CC

**June 17-july 6**  
Heart of America  
Shakespeare Festival

**June 17-22**  
The Drowsy  
Chaperone at  
Starlight Theatre

**June 21**  
Taste of the  
Northland

**June 20-23**  
USTA Missouri  
Valley Sweet 16

**June 23**  
NSCD Golf  
AbilityCAMP

**June 23-28**  
Garden Center  
Association Tree  
Camp, Tree Planting  
and Fundraiser

**June 24**  
KCWE Free Swim  
Pool Party

**June 27**  
SkillsUSA trail  
building in Hidden  
Valley Park

**June 27**  
Alvin Ailey clean up  
in Penn Valley Park

**June 29**  
Children's TLC Duck  
Derby on Brush  
Creek

**July 1-31**  
National Recreation  
and Parks Month

**July 1-2**  
Plaza Junior Open  
Tennis Tournament

# Completed Projects

- Amity Woods Nature Park Trail-Phase 1
- Arleta Park Playground
- Barry Road Park Shelter, Parking Lot and Rain Garden
- Blues Park Playground
- Brookside Court Park Improvements
- Brookside Court Lighting
- Chelsea Park Improvements
- Chouteau Greenway Park Improvements
- Cliff Drive Restoration-Phase 2
- Cypress Park Playground
- Dunn Park Playground
- Essex Park Playground
- Gage Park Playground
- Garrison Community Center Stone Stair Replacement
- Gillham Park Stairs
- Hyde Park Stairs
- Indiana Park Playground
- Iser Park Playground
- Longview Tract - Playground and Shade Structures
- Lykins Park Playground
- New Southeast Community Center in Swope Park and 1% for Art Installation
- North Congress Park Playground
- Northeast Athletic Field Playground

# Completed Projects

- Park Forest Park Lighting
- Platte Purchase Park Solar Lighting in Shelter and Park Road Paving
- Pleasant Valley Park Parking Lot Expansion and Drainage Improvements
- Prospect Park Playground
- Shoal Creek Living History Museum-Stone Repair to Water Well and Lighting
- Skiles Park Playground
- South Oak Park Lighting
- Spring Valley Park Playground
- Spring Valley Park Solar Lighting
- Swope Park Bathhouse Renovation
- Swope Park Playground
- The Grove Playground
- Tiffany Springs Park Parking Lot Improvements
- Tony Aguirre Community Center Pool Dehumidification Replacement
- Vineyard Park Lighting
- Waterwell Athletic Complex Parking Lot, Landscape and Maintenance Building
- Waterwell Park Playground
- Waterworks Park Lighting and Curb Improvements
- Winner Park Shelter
- Woodsmoke Park Lighting

**July 3**  
Gillham Park pre-4th of July Celebration



**July 8**  
Mayor's Night Kicks Kick Off

**July 8, 22**  
KCWE Free Swim Pool Party



**July 8**  
18th & Vine Terrace Groundbreaking



**July 10**  
Welcome to Hollywood: Take Your Dog to the Movie Night

**July 11, 18, 24 and August 1**  
Hyde Park Children's Film Festival



**July 11-13**  
USTA National Husband Wife Hard Court Tennis Tournament

**July 15-20**  
High School Musical at Starlight Theatre



**July 22**  
Commissioner Conger Swearing-In Ceremony

**July 25-27**  
Missouri Valley Swimming Division II Championships



**July 26**  
Dragon Boat Festival



**July 28-August 3**  
The Music Man at Starlight Theatre

**July 30**  
Women's Leadership Fountain Groundbreaking



**August 1**  
Rose Garden in Loose Park closes for renovations

# KC Parks Partners

*Kansas City, Missouri Parks and Recreation has formal partnerships established with over 100 neighborhood, community, for- and not-for-profit organizations. These partnerships allow our department to leverage resources and generate city-wide interest and support for our system facilities, programs and events. We appreciate your support!*

3 & 2 Baseball  
 3-Trails CID  
 Ambiance on the Water  
 Bimbo Bakeries  
 Black Archives of Mid-America  
 Blue River Watershed Association  
 Blue Valley Neighborhood Association  
 Boys & Girls Club of Greater Kansas City  
 Briarcliff Community Alliance  
 Broadway/Westport Council  
 Brookside Business Association  
 Brookside Soccer Club  
 Brush Creek Community Partners  
 Budd Park Committee  
 Carpenters Union of Kansas City  
 Center Planning  
 Center School District  
 Chameleon Arts & Youth Development  
 Chaumiere Neighborhood Association  
 Children's Mercy Family Health Partners  
 Children's Mercy Hospital  
 City Market  
 City of Fountains Foundation  
 City of Gladstone Parks and Recreation  
 Clay County Parks and Recreation  
 Clay County Veterans Memorial Comm.  
 Clay Platte Baseball League, Inc.  
 Clayview Country Club  
 Cliff Drive Corridor Management Committee  
 Consulado De Mexico  
 Crestview Homes Assoc.  
 Dogpark Improvement Group (DIG)

Downtown Council (DTC)  
 Earth Riders Trail Association (ERTA)  
 810 Sports Radio  
 Economic Development Corporation  
 Ethnic Enrichment Commission  
 Federal Reserve Bank  
 Friends of Amity Woods Nature Park  
 Friends of Bruce R. Watkins Cultural Heritage Center  
 Friends of Gillham Park  
 Friends of Lakeside Nature Center  
 Friends of Penn Valley Park  
 Friends of Riverfront Park  
 Friends of The Zoo  
 Frontyard Features  
 Full Employment Council  
 Garden Center Association  
 Garrison Community Center Youth Advisory Board

Gillham Road Advisory Committee  
 Golden Oaks Neighborhood Assoc.  
 Guadalupe Center  
 Gumdrop Books  
 Hallmark Cards Inc.  
 Heart of America Council Heart of America Boy Scouts  
 Health Care Foundation of Greater KC  
 Heart of America Shakespeare Festival  
 Heartland Tree Alliance  
 Hickman Mills School District  
 Highwoods Properties  
 Hills of Walden Home Owners Assoc.  
 Hispanic Chamber of Commerce  
 Hispanic Football Soccer Assoc.  
 Historic NE Cultural Arts Commission  
 Home Builders Association of Greater Kansas City  
 Hyde Park Children's Film Festival  
 Jiggle Jam Family Festival  
 Just Off Broadway Theatre

Kansas City Art Institute  
 Kansas City Cancer Center  
 Kansas City Community Gardens  
 Kansas City Cricket Club  
 Kansas City Flying Disc Club  
 Kansas City, Missouri School District  
 Kansas City Northern Railroad Inc  
 Kansas City Organics & Natural Market  
 Kansas City, Missouri Police Department  
 Kansas City Pop Warner Football  
 Kansas City Rose Society  
 Kansas City Royals  
 Kansas City Tennis Alliance  
 Kansas City Wild Lands-Bridging the Gap  
 Kansas City Wizards/OnGoal LLC  
 Kansas City Zoo  
 Kauffman Scholars  
 KC Irish Festival  
 KC Korean War Memorial Inc.  
 KC Storm Swim Team  
 Kansas City Area Development Council  
 Kansas City CVA  
 KCWE Channel 29  
 KLM Marketing Solutions  
 Liberty Memorial Association  
 Local Initiatives Support Corporation (LISC)  
 MainCor  
 Major Infinity Tencap  
 Martin City CID  
 Mattie Rhodes Center  
 Mid America Regional Council (MARC)  
 Mid Continent Public Library  
 Midwest Pool Management  
 Mill Creek Park Association  
 Missouri Department of Conservation  
 Missouri Department of Natural Resources



Early in their term, the Board of Parks and Recreation declared "marketing" as a top priority for the department. As a result, a new image campaign and branding logo were introduced in July. The green ball design was created in partnership with the Kansas City Area Development Council and modeled after their red ball, "One KC" campaign and concept. The new brand was extended for use by our Parks PARTNERS at a reception held October 9 in the Helzberg Diamonds VIP Room at Starlight Theater. Representatives from more than 50 Partner organizations attended to learn about the new green ball branding and receive the tools to co-brand with KC Parks. It is anticipated that through co-branding, we will expand our image and showcase the vastness and impact parks has on the metro area as united Kansas City Parks PARTNERS.



**august 5, 12**  
 KCWE Free Swim



**august 15-17**  
 29th Annual Ethnic Enrichment Festival

**august 9,16,23 & 30**  
 Budd Park Movies in the Park Nights



**august 21**  
 Brookside Court Park Dedication



**august 22**  
 Mayor's Night Kicks Championship Game

**august 23-24**  
 Carnival a la Grand in Penn Valley Park



**august 29-31**  
 KC Irish Fest

**september 2**  
 Ballet Among the Roses (cancelled)

**september 4**  
 Kansas City Beautiful Awards



**september 4**  
 810 Sports Radio Dippin' Dogs Swim Party at Line Creek



**september 6**  
 Walking Community on the Move Kick Off

**september 8**  
 Gates/Enshriner's Golf Tournament



**september 8**  
 Tour of Missouri Stage One and Health Expo

**september 10-16**  
 Les Miserables at Starlight Theatre

Missouri Department of Transportation  
 Monnett Battle of Westport Fund, Inc.  
 Mosaic Brain  
 National Center for Indigenous American Cultures at Line Creek, Inc.  
 National Sports Center for the Disabled (NSCD)  
 Northland Animal Welfare Society, NAWS  
 Noble Homes Association  
 North Kansas City Area Baseball Assoc.  
 North Kansas City School District  
 Northland Sports Alliance  
 North Suburban Youth Football League  
 Northeast News  
 Northern Knights  
 Northland Chamber of Commerce  
 Northland Neighborhoods, Inc.  
 Optimist Athletic Association  
 Park Hill School District  
 Platte County Parks and Recreation  
 Platte County Parks Partners  
 Platte County Trails Coordination Committee  
 Plaza Rotary Club  
 Police Athletic League (PAL)  
 Port Authority of Kansas City, Missouri  
 Prince Sports  
 Rhythm & Ribs Jazz Fest  
 Rockhill Homes Association  
 Rockhill Tennis Club  
 Rockhurst University Tennis  
 Ronald McDonald House Charities  
 Shoal Creek Association  
 Sister City Association KC  
 Society for Friendship with China  
 South KC Chamber of Commerce  
 Southeast Community Center Advisory Board

Southern Community Coalition  
 Southtown Council  
 Special Olympics Missouri  
 Stand of Colors, Rotary Club 13  
 Starlight Theatre Association  
 Stephanie Waterman Foundation  
 Tennesstet.com  
 Thomas Hart Benton Sierra Club  
 The Enshriners  
 The Historical Society of New Santa Fe Trailside Center  
 The Kessler Society  
 Tiffany Springs Park Partners  
 Tony Aguirre Community Center Advisory Committee  
 Touched by Cancer Foundation  
 University of Missouri Kansas City  
 Union Broadcasting  
 Union Cemetery Historical Society  
 Union Station  
 United States Tennis Association (USTA)  
 United Way of Great Kansas City Young Leaders Society  
 Urban American Outdoors  
 Vernon Hills Homes Association  
 Vietnam Veteran's of America Chapter 317 Partnership  
 Vivion Road Gang  
 Ward Family Foundation  
 Ward Parkway Homes Association  
 Westside CAN Center  
 Winwood-Sunnybrooke Neighborhood Association  
 WaterFire Kansas City  
 Woodside Tennis & Health Club  
 World Team Tennis  
 YMCA of Greater Kansas City

## How it Works

S.H.A.P.E. (Safe, Healthy, Attractive, Public, Environments) provides up-to-date information on overall conditions of Kansas City's park system. The focus of the program is to work effectively on a citywide level to ensure all parks owned properties are equally maintained. Inspectors rate up to twenty amenities, grade each property with an "acceptable" or "unacceptable" rating, and then immediately report conditions. Each quarter results are presented to department staff, Parks Board Commissioners, Mayor, City Manager and other elected officials in order to encourage input. All results can be viewed on Parks and Recreation's webpage, [www.kcmo.org/parks](http://www.kcmo.org/parks).

## Why we do it

When George Kessler designed the Kansas City park system, he created a unique gem for many generations to adore. The elaborate system has flourished to include 9,799 acres of park owned land that must be monitored frequently to stay on top of routine maintenance while the objective remains on improving cleanliness efforts. In recent years, staffing levels have diminished while work improvement needs have increased. Because of this, inspector visits help the department identify operational strengths and weaknesses.

Promoting and protecting our City's park system is essential for future generations. Our department staff shares ownership and takes pride in the parks and facility areas they maintain every day. With S.H.A.P.E. we have created a standardized labor plan that helps us work smarter, more efficiently, and most importantly, as a team.

## S.H.A.P.E. 2008 By the Numbers

**2004** park inspections conducted

**190** parks involved

**88%** park acceptability rating

**9,799** acres of Kansas City parkland

**86%** facility acceptability rating

**240** facility inspections conducted

**28** facilities involved



**september 18**  
Korean War Memorial Groundbreaking



**september 20**  
Prairie Days



**september 20**  
Born Learning Trail Installation & Dedication



**september 26**  
City Market Cinema

**september 26-28**  
The "Doubler" Touched by Cancer Foundation Tennis Tournament



**september 26-27**  
Wonders of Wildlife in Swope Park

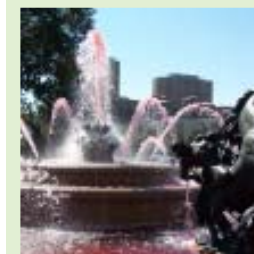
**september 26-28**  
Oktoberfest in Washington Square Park



**september 27**  
American Royal Parade

**september 27**  
National Public Lands Day at Swope Park

**october 1**  
"Pinking" of the Fountains Ceremony



**october 1-8**  
Pink Fountains Week



**october 1**  
Meyer Circle Sea Horse Fountain Repairs Begin

**october 3-5**  
USTA Missouri Valley Outdoor Tennis Tournament



## Measurements

2,532,766

**Total participation**  
All facilities and programs

542,807

**Youth participation**  
All facilities and programs

549,191

**Customer participation**  
Community Centers

126,869

**Customer participation**  
Pools and Spraygrounds

244,908

**Customer participation**  
Athletic Facilities and Programs

69,178

**Total acreage mowed**

6,970

**Citizen 3-1-1 Action Center**  
Requests resolved

1,389

**Graffiti incidents removed**

## Admissions

**Kansas City Zoo:** 482,949

**Liberty Memorial:** 156,604

**Starlight Theatre:** 250,063

## Forestry

**Trees planted:** 3,178

**Trees trimmed:** 16,468

**Trees removed:** 2,043

## Maintenance

### Park\*

**Athletic field maintenance:** 2,821

**Landscape maintenance:** 11,604

**Park repairs:** 11,869

**Special event preparation:** 2,344

**Litter/trash removal:** 34,949

*\*Hours worked*

## Volunteers

**Number of volunteers:** 6,558

**Volunteer hours:** 44,594

**Estimated value:** \$718,847.38

## Events

**Number of events:** 282

**Event attendance:** 551,856

## Accolades

**MISSOURI PARK & RECREATION ASSOCIATION, ETHNIC MINORITY SOCIETY AWARDS**

Young Professional Award  
*Anthony Parks*

Park Services Achievement  
*Cathleen Jones*

Outstanding Hero Award  
*Helston Singleton*

**KC PARENT MAGAZINE'S FAMILY FAVORITES**  
Grand Prize, Favorite Playground  
*Penguin Park*

Grand Prize, Favorite Picnic Spot  
*Loose Park*

Finalist, Favorite Outdoor Amusement Center  
*The Springs Aquatic Center*

**PITCH MAGAZINE'S BEST OF KANSAS CITY**  
Best Park: Editorial Staff Choice  
*Cliff Drive*

Best Park: Readers Choice  
*Loose Park*

**INGRAM'S MAGAZINE BEST OF BUSINESS KC**  
Best Theatre (Bronze)  
*Starlight Theatre*

Best Performing Arts Venue (Gold)  
*Starlight Theatre*

Best Museum or Art Gallery (Bronze)  
*National World War I Museum at Liberty Memorial*

Best Family Outing Venue (Gold)  
*Kansas City Zoo*

**KANSAS CITY CVA VISITORS' CHOICE AWARDS**  
Favorite Museum or Historical Site  
*World War I Museum at Liberty Memorial*

Favorite Performing Arts Venue or Organization  
*Starlight Theatre*

**USTA/HEART OF AMERICA DISTRICT AWARDS**  
Tournament of the Year  
*USTA Missouri Valley Section NTRP Outdoor Championships at the Plaza Tennis Center*

Event of the Year  
*USTA Recreational Tennis Coaches Workshop at Tony Aguirre Community Center*

Outstanding Contributor to Youth Tennis  
*Scott Hanover*

**AMERICA'S BEST ZOOS 2008**

**THE INTREPID TRAVELER**  
African Animals and Exhibit  
*Kansas City Zoo (#1)*

Australian Animals and Exhibits  
*Kansas City Zoo (Top 10)*

Pachyderms: Elephants, Rhinos, Hippos Tapirs  
*Kansas City Zoo (#3)*

**SOUTHTOWN COUNCIL BEAUTIFICATION AWARDS**  
*Bea Davis Mall & Pergola*  
*Kansas City Zoo Front Entry Plaza*

*New Playgrounds Project*

**Best Outdoor Playspace for Little Kids**

Nickelodeon 2008 Parents Picks @ Parentsconnect.com  
*Penguin Park*

**TOMA Award: Creative Projects**

Southwest Park and Recreation Training Institute  
*The Extreme Makeover Playground in Chouteau Greenway Park*

**Excellence in Construction Awards, Heavy/Site Work/Demolition**

Associated Builders and Contractors, Inc.  
*Searcy Creek Parkway*

**2008 Keystone Recognition Awards, Community Clay County Economic Development Council**  
*Searcy Creek Parkway*  
*Shoal Creek Parkway*

**Merit Award, Communications**  
American Society of Landscape Architects Central States Awards Committee  
*Boulevard & Parkway Standards Manual*

**Institute Honor Award for Architecture**

American Institute of Architects  
*World War I Museum at Liberty Memorial*

**Top 40 Public Artworks**

*Americans for the Arts*  
*World War I Museum at Liberty Memorial*

**Interactive Design Outstanding Award**

*HOW Magazine*  
*World War I Museum at Liberty Memorial*

**Cornerstone Award**  
Economic Development Council  
*World War I Museum at Liberty Memorial*

### EMPLOYEE RETIREMENTS

**Clarence Alberty, 24 years**

**Austin Campbell, 31 years**

**Richard Enfield, 30 years**

**Marci Jones, 29 years**

**Robert Josephine, 30 years**

**Dennis McMan, 23 years**

**Gary Norman, 28 years**

**Ernest Wallace, 18 years**



october 4-5  
KC Indian Art Market & Cultural Festival



october 9  
KC Parks PARTNER Reception

october 10-11  
Magic Woods at Lakeside Nature Center



october 11  
Harvest Festival at Shoal Creek

october 18  
Monnett Society Visitor Center Grand Opening



october 18  
Barack Obama Rally at Liberty Memorial

october 18  
Kansas City Marathon



october 25  
WaterFire Kansas City on Brush Creek

november 1  
The Wilderness Run



november 8-9  
7th Missouri Infantry and KC Expedition

november 11  
Veterans Day Observances



november 15  
Earth Riders Trail Association Swope Park Trail Opening

november 15  
Turkey Bowl at Line Creek Ice Arena



december 1-5, 8-12  
Holiday Concert Series at Union Station

december 2  
18th & Vine Terrace Ribbon Cutting



## BOARD OF PARKS AND RECREATION COMMISSIONERS

John Fierro, *President*  
 Tyrone Aiken  
 Meghan Badwey Conger  
 Aggie Stackhaus  
 Ajamu K. Webster

## MAYOR

Mark Funkhouser, *Mayor*

## CITY COUNCIL

Deb Hermann, <i>First District-At-Large</i>	Beth Gottstein, <i>Fourth District-At Large</i>
Bill Skaggs, <i>First District</i>	Jan Marcason, <i>Fourth District</i>
Ed Ford, <i>Second District-At-Large</i>	Cindy Circo, <i>Fifth District-At-Large</i>
Russ Johnson, <i>Second District</i>	Terry Riley, <i>Fifth District</i>
Melba Curls, <i>Third District-At-Large</i>	Cathy Jolly, <i>Sixth District-At-Large</i>
Sharon Sanders Brooks, <i>Third District</i>	John A. Sharp, <i>Sixth District</i>

In the late 19th century, Kansas City had few paved streets and even fewer sidewalks, but the town was booming. As the population continued to grow and the city land size increased, the main focus remained on commerce and building places for people to live and work. There was, however, a group of citizens who saw the need for creating a better quality of life and improving the city's appearance through the development of municipal parks, and later, a boulevard system.

The fledgling park movement continued to gather momentum until one of its firmest supporters, William Rockhill Nelson, moved to town and took up the cause. As the editor of the evening newspaper, *The Star*, Mr. Nelson used his position to campaign for paved roads and streets. He also advocated for improved sidewalks and sewers, decent public buildings, better streetlights, and more fire and police protection. His most enduring legacy, however, was the city's parks and boulevard system which he promoted with August Meyer, local businessman and president of the 1892 Park Board, predecessor to the Board of Parks and Recreation Commissioners. The Park Board hired landscape architect George E. Kessler to design a boulevard and park system master plan that would provide for a "city with a park."

Work on the boulevard system began in 1893 with the development of Independence and Gladstone Boulevards. Acquisition of properties began in earnest when, in 1895, the city approved a charter amendment to give the Parks Board power to condemn land, issue bonds and receive special taxes. North Terrace Park (now Kessler Park), West Terrace Park and later Penn Valley Park were among the first developments. A milestone was achieved with a gift of property from Col. Thomas H. Swope, a pessimistic "knocker" of the parks plan. In 1896, Swope deeded to the city 1,200 acres, which became the park that bears his name and the largest park in the system. Another important gift to the city was that of Loose Park in 1927, donated by Ella Loose in memory of her husband, Jacob.

Since then, hundreds of additional parks and boulevards have been developed throughout the greater Kansas City area. In 1967, the Park Department and Recreational Division of the city's Welfare Department were combined into the present-day Kansas City Parks and Recreation Department. Thanks to the foresight of city leaders and advocates, Kansas City is internationally known for its beautiful parks and boulevards system. Today's Parks, Recreation and Boulevards Department honors the past while continuing to grow and make improvements for the future.

*Photo Credits: Wheat Photography; Ryan Casey; Elaina Gonerally; Shannon Dooley, Heidi Downer, Jesse Frazier and Melinda Minks, KCMO Parks and Recreation Marketing & Special Events*



**december 5**  
Senior Holiday Luncheon



**december 5**  
Santa's Wonderland in Gillham Park

**december 6**  
Santa's Wonderland in Penguin Park

**december 6, 12,13, 17, 18 and 20**  
Youth Holiday Parties



**december 6**  
A Visit from Saint Nicholas



**december 11-14**  
Cyclocross Nationals

**december 13**  
Grand Opening of the new Southeast Community Center in Swope Park



**december 13**  
Kris Kringle 5K Run

**december 13**  
Bruce R. Watkins Cultural Heritage Center 20th Anniversary Kick-Off Celebration



**december 14**  
Paws Meet Claus at Penn Valley Off-Leash Dog Park

**december 17**  
Employee City Service Awards



**december 19**  
Briarcliff Parkway Groundbreaking



**december 20**  
Skate with Santa at Line Creek Ice Arena