

discover  ver 

Kansas City, Missouri Parks and Recreation



## mission

To improve the quality of life by providing recreational, leisure, and aesthetic opportunities for all citizens, and by conserving and enhancing the environment.

We will accomplish this mission by providing quality programming, making the best use of existing resources, developing a supportive and influential constituency, developing effective collaborations and partnerships, and acquiring and preserving natural features.



**Photo Credits:** Paul McMillian; Shannon Dooley, Heidi Downer, Jesse Frazier and Melinda Minks, KCMO Parks and Recreation Marketing & Special Events



*Mark L. McHenry leads the Blazing Paddles Racing Team at the annual Dragon Boat Festival & Races.*

### Dear Friends of Parks and Recreation:

As we move into 2010, it's appropriate to look back at last year's accomplishments. 2009 was a busy and challenging year for Kansas City, Missouri Parks and Recreation. We have all felt the impact of our country's struggling economy and, as a result, have had to deal with significant change. At Parks and Recreation, we have experienced reduced staff, lowered levels of service in our parks, and revisions in operating hours at our facilities.

In spite of these setbacks, we were able to continue servicing our community's youth with enhanced recreational and educational programming specific to their needs. We also amplified our marketing efforts through the use of social media. The KCMO Parks and Recreation Facebook page went live in October. I hope you have all had the opportunity to become a fan! Another achievement we proudly attained was the reaccreditation of our department for the third time in ten years making us one of only 78 nationally accredited parks and recreation agencies in the country. As you read through this Year in Review booklet, you will find details regarding additional 2009 accomplishments.

Although these are trying times, the Board of Parks and Recreation Commissioners and our staff will continue to provide quality programs, excellent parks, trails, recreational amenities and cultural activities for our community in 2010 and beyond.

Sincerely,  
Mark L. McHenry, Director



*2009 was a banner year for the Kansas City Zoo. It celebrated its centennial; reopened the renovated original 1909 Zoo building as the Tropics; experienced record attendance of 544,316; and began construction on a \$10 million polar bear exhibit to be opened in 2010.*



*At 100 years old, the Kansas City Zoo has expanded to include more than 200 acres of beautifully landscaped park and is home to 1,000 animals from around the world.*

*The Tropics, an indoor rainforest, provides a mild humid temperate haven for plants and animals from three continents. Primate antics of Asian Gibbons, South American Saki Monkeys, Tamarins, African Mona and Blue Monkeys are the highlight of the Tropics entertainment.*

In 1907 a dream began. City activists declared an idea to “create the largest zoological garden in the United States. There will be nothing better in the world. Swope Park is an admirable site for this purpose...”

The Parks Board set aside 60 acres in Swope Park in 1908 for the Kansas City Zoological Gardens. Fundraisers, lectures and parades followed resulting in The Bird and Carnivore House, the first Zoo building. In December 1909, the Kansas City Zoological Gardens officially opened with four lions, three monkeys, a wolf, fox, coyote, badger, lynx, eagle and other birds.

In 1948, a children's zoo, Touchtown, was launched that featured a petting zoo with domestic animals and freestanding structures.

In 1961 the Hallmark Company donated the “Birthday Pavilion” for birthday parties. A puppet theater opened in Touchtown in 1964; it was

remodeled in 1970 to become the Education building.

The Dairy Barn, funded by the Kansas City division of Mid-American Dairymen, was built in 1971. The Dairy Barn housed cows and milking equipment, and children were encouraged to participate in milking.

In 1972, the Kansas City Southern Railroad donated a miniature railroad, and construction began on a two-mile track .

Local philanthropist Delbert Dunmire financed Prairie Dog Town in 1987. It added to the small animal exhibits and offered another example of a species indigenous to North America.

In the early 1990s, the Zoo experienced a massive reconstruction and development. The Zoo Railroad was also shortened to its current 1-mile route.

In January 2002, an historic partnership between the Kansas City Zoo and Friends of the Zoo was made to enhance the quality of exhibits and continually improve the Zoo experience for the visitor. Under the agreement, Friends of the Zoo, a non-profit, membership-based organization, manages all Zoo operations in agreement with the Kansas City, Missouri Board of Parks and Recreation Commissioners.

Today, a 202-acre nature sanctuary, the Kansas City Zoo is the most useful and accessible resource in the region for bringing urban and suburban families in touch with the diverse habitats, cultures and animals of the natural world. A visit to the Zoo is a journey around the world, an interactive experience that utilizes all the senses to entertain, educate and engage visitors of all ages. For many, the Zoo serves as the only link to animals and habitats that remain wild on our planet and opens hearts and minds to the importance of preserving the natural world for generations to come.





# women's leadership fountain

*Kansas City, Missouri's 47 iconic fountains came very close to not flowing in 2009 after the fountain's operating costs were cut from the City's budget.*

*Fortunately, the City's Water Services Department stepped up to assist with covering the costs for the 2009 season and, once again, the fountains flowed.*

*In order to proactively address this budget issue and insure the future operation of our fountains, the Friends of the Fountains fund was created.*

*Fountains have long been part of Kansas City's identity and are a visual display of community pride. Help showcase the beauty and craftsmanship of these celebrations of water by donating to the Friends of the Fountains at [www.kcmo.org/fountains](http://www.kcmo.org/fountains).*



Kansas City's oldest public fountain, the Women's Leadership Fountain was rededicated in early June of 2009. The fountain along, with other historic landmarks located in The Paseo's median between Ninth and Twelfth Streets-- including the Meyer Monument, The Terrace and the Fitzsimon's Memorial--underwent a major restoration that began in 2008. Susan Richards Johnson & Associates, Inc. (SRJA) was hired to do the complete restoration.

In August 2006, an overwhelming percentage of citizens said "yes" when asked to support a Voter Referendum to allow the sale of a small tract of property at 22<sup>nd</sup> & Gillham Road. It is these funds that were used to restore the Women's Leadership Fountain and this section of Paseo's monuments to their original glory.

The fountain at Ninth Street and The Paseo was designed in 1898 by George Kessler and

John Van Brunt as an entry feature to the then newly created Paseo Boulevard.

After years of service, the fountain deteriorated. A partial renovation in 1990, assisted by the fundraising efforts of The Central Exchange, kept the fountain running for several more years. At that time, it was renamed the "Women's Leadership Fountain" and dedicated to 13 notable Kansas City women who had made long-lasting contributions to the City. All of these women triumphed over adversity and are forever remembered in the fabric of Kansas City history. Honorees include:

Madalyn Pinkston Brock - activist, businesswoman, established the Madalyn Brock Foundation; Esther Swirk Brown - promoted social justice and equality in education; Carolyn Benton Cockefair - English professor who promoted continuing education; Phoebe Jane Ess - supporter of women's suffrage, first woman to

run for public office in Kansas City; Katherine Berry Richardson and Alice Berry Graham - dentist and doctor sisters who founded Children's Mercy Hospital; Mary Harmon Weeks - educator, a founder of the Parent Teacher Association; Ellen (Nell) Donnelly Reed - seamstress, progressive manufacturer, founder of Donnelly Garment Company; Bertha Manheimer Lieberman - first president and honorary life president of the Greater Kansas City Section of the National Council of Jewish Women; Nelle Elizabeth Nichols Peters - architect of homes, office, apartment and hotel buildings; Myrtle Page Fillmore - founder of Unity School of Christianity; Ada Crogman Franklin - educator, founder of Kansas City Call newspaper; and Guadalupe Bribiesca de Garcia - organizer of the Guadalupe Center, Westside Fiesta and community events

A maintenance endowment is in the process of being created to preserve these amenities for future generations.





# laura conyers smith municipal rose garden

*The Kansas City Rose Society is an all-volunteer organization that began when a group of residents, under the leadership of Laura Conyers Smith, established the Kansas City Rose Society and its public garden in Loose Park.*



*Since that time, the garden has been maintained through a partnership wherein the Rose Society furnishes all the roses and Parks and Recreation staff provide ongoing care. In addition, Rose Society members volunteer hundreds of hours each year to assist staff with pruning the garden.*

*To celebrate the height of the rose season, the Rose Society annually hosts Rose Day on the first Sunday in June. They also sponsor events and seminars throughout the year.*

Thanks to funds raised by the Rose Society from public and private donors, the Laura Conyers Smith Municipal Rose Garden in Loose Park underwent an extensive renovation in 2009.

The project included: improved drainage and irrigation systems; installation of metal edging; improvements to the north shelter; installation of an interior circular walking path; the planting of 1,200 new roses; and the redefining of the flower beds back to the original plans. The newly refurbished garden was celebrated on Rose Day which took place June 7.

Founded in 1931, Kansas City's rose garden, was the realization of a dream of the Kansas City Rose Society. The first garden contained 120 rose plants. Today, there are 4,000 roses of nearly 150 varieties in the 1.5-acre garden.

The garden's circular plan was the original concept of the eminent landscape architect, S. Herbert Hare. The garden's pergolas, gifts from individuals and organizations in early years, bear commemorative plaques.

In 1944, the West Garden was dedicated to the heroes of World War II.

In 1965, the garden was rededicated and officially named the Laura Conyers Smith Municipal Rose Garden. Laura Conyers Smith was one of Kansas City's most enthusiastic and capable horticulturists and founder of the Kansas City Rose Society. She worked closely with the Board of Parks and Recreation Commissioners in establishing and planning the Municipal Rose Garden in Loose Park.

In 1989, the garden was honored nationally with the All America Rose Selections (AARS) Bronze Achievement Award.

Through the years, the Friendship and Memory Rose Program has provided funds for the upkeep of the garden. Each year, about \$5,000 is spent replacing roses.

The Rose Garden is an accredited All-America Rose Selections Public Rose Garden, one of only 130 nationwide. Annual preview plantings of AARS Award Winners provide rose lovers the opportunity to view the performance of a wide selection of roses grown under Kansas City conditions.

The original fountain was replaced with a new Italian stone replica and surrounding walks were dedicated in 2002— the Year of the Rose. This sparkling centerpiece was made possible by generous contributions from private donors.

The Rose Garden is a very popular place for weddings with about 250 couples tying the knot among the roses each year.





# party in the park

*Thomas Hunton Swope was born in Kentucky in 1827. After living in several states, he eventually made his way to Missouri when he moved to St. Louis where he began working in real estate. He came to live in Kansas City in 1857 after purchasing some property here and later became the largest individual land owner in Kansas City. Mr. Swope was called "Colonel" Swope, but the title was honorary and not from military service.*



*In 1896, Colonel Swope donated 1,334 acres to the City of Kansas City, Missouri for use as a public park.*

*With property acquisitions made over the years, the park now has 1,805 acres. It is Kansas City's largest park and one of the largest urban parks in the United States.*

More than 5,000 area residents came out to play all day and into the night at Party in the Park on July 11 in Swope Park. The inaugural event--held in celebration of National Park and Recreation Month--featured free or low-cost, family-friendly activities at Swope Park's attractions throughout the day.

Swope Park is the crown jewel of the Kansas City, Missouri park system and home to many of Kansas City's finest attractions including the Kansas City Zoo, Lakeside Nature Center, Swope Memorial and Heart of America Golf Courses, Kansas City Wizards training facility, Southeast Community Center and Starlight Theatre. Each of these amenities played an important role in the success of the Party in the Park.

The day began with a two-mile health walk in the park led by the staff of the Southeast Community Center. The party kicked into high

gear with Blues & Breakfast at Starlight Theatre. The concert, presented by EPIC Entertainment, showcased the Starlight Stars and local blues singers, the Wild Women of Kansas City.

A multitude of events were available to participants throughout the day and throughout the park including demonstrations and rides on the ERTA Trail; herb walks in the Beanstalk Children's Garden at Kansas City Community Gardens; stories, crafts and a nature hike at the Lakeside Nature Center; health screenings presented by MAST; handcycling demonstrations by the National Sports Center for the Disabled; fishing with the Sol Pro Bass Club at Lake of the Woods; tree climbs with Tree Climbing of Kansas City; and Kansas City Cricket games on Lewis Road fields. Additionally, the Battle of Westport Museum was open for tours.

The new Southeast Community Center was a hub of activity with a photography exhibit by Paul McMillian, a dedication of the Master Gardener's Demonstration Garden, and Culture Box Displays by the Ethnic Enrichment Commission.

The Kansas City Zoo shared in the fun with a Kids Fun Fest and Kids Conservation Club.

Attendees were able to cool off at the KCWE Free Swim Pool Party presented by Children's Mercy Family Health Partners at Swope Pool. A capacity crowd enjoyed fun in the sun, swim contests and healthy snacks.

The day concluded with a Concert in the Park by the newly renovated Bandstand. The show featured a variety of local talent presented by Hot 103 JAMZ!

The second annual Party in the Park will take place Saturday, July 24, 2010.





# kansas city cup

*Earth Riders Trails Association (ERTA) is a recreational trails advocacy group created to increase the quantity and quality of sustainable singletrack trails throughout the Midwest.*



*Since establishing a partnership with KC Parks, ERTA has gone full force in the development of hiking/biking trails in Swope Park's Camp Lake of the Woods. Phase One, 1.35 miles, opened in November 2008. Phase Two, 2.1 miles, opened in August 2009. 1,610 total volunteer hours have been dedicated to design, construct and maintain the 3.45 miles of trail system to-date.*

*Phase Three, an additional 3 miles, is currently under construction with an expected opening date in April 2010.*

In order to showcase the new trail system in Swope Park, the 6<sup>th</sup> Annual Kansas City Cup Challenge cycling event weekend was held September 19-20 at Camp Lake of the Woods.

More than 300 bicycle racers participated in Swope Park's first mountain bike race and enjoyed a brand new, perfectly groomed, single-track course.

Kansas City Cup events included a cyclocross race on Saturday with 165 participants. One-hundred and twenty-five racers competed in Sunday's Mountain Bike race which specifically highlighted the newly constructed Swope Park single track trail network. Kids' Races were held on both days.

The cyclocross course kept everyone's speed in check with multiple turns and barriers. The inaugural mountain bike race on the new trail system included a dramatic flyover from the

A-10 Thunderbolt's, fast flowing single-track, technical sections and over 400' of climbing per lap to keep riders pushing themselves hard to the finish.

In addition to almost 300 racers, the Kansas City Cup also attracted 300 plus spectators.

A fund raising event for the Swope Trails network, the Kansas City Cup Challenge generated more than \$1,000 towards the continued development of the trail system.

Within Camp Lake of the Woods the single track trail system is comprised of six phases. The total anticipated mileage in this area should exceed 12 miles with an expected complete build out in 2012. An additional 7 miles of trail around Swope Memorial and Wildcat Hollow is to follow for a total of approximately 19 to 21 miles of world class hiking and mountain bike trails within Kansas City's largest park.

The Kansas City Cup was managed and promoted by Heartland Sports Promotions (HSP) in partnership with Earthriders Trails Association (ERTA). Since 2000, HSP has promoted 40 cross country series races, 20 ultra endurance races, and five festivals. The events have drawn more than 12,000 racers and spectators and are made possible by the work of more than 50 volunteers each year.

Special thanks are extended to the Swope Trails Crew, Joe Folse and ERTA for providing concessions, Midwest Mountain Bike Patrol for recruiting volunteers, 360 Racing for sponsoring the cyclocross race, Harvest Graphics, and Alex Grigsby for photography.

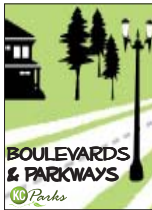
As a result of its success, the Kansas City Cup Challenge will remain in Swope Park. The 2010 event is scheduled for September 18-19 at Camp Lake of the Woods.





# northland parkways

*Kansas City has 132 miles of spacious boulevards and parkways that wind their way through the city. Much of the system, designed by George E. Kessler, was constructed from 1893 to 1915. The historic Parks and Boulevard System is a defining feature of Kansas City's character.*



*Protecting our city's historic integrity while allowing the boulevard and parkway network to respond positively to current and future demands is a challenge the Board of Parks and Recreation Commissioners takes seriously.*

*Unity is established by encouraging the development of new boulevards and parkways which, as often as possible, mirror the unique and distinct qualities of the system as a whole.*

Extending the parkway and boulevard system in areas of the city that lack connections to the existing system is part of the department's Master Plan. As such, several parkway extension projects, located north of the river, were completed in 2009-- Briarcliff Parkway and Shoal Creek Parkway.

These Northland parkways were designed to balance the need to move traffic with the desire to maintain a "city within a park."

Kansas City's parkways tie the community together with ribbons of green, truly taking parks to the people. Parkway generally run north and south with wide medians and side panels. Following the natural terrain and retaining pastoral quality even as they wind through developed areas, parkways are intentionally less formal in alignment than boulevards. Though they are augmented with both formal and informal features, the

landscape character overall is also more informal than that of a boulevard.

Briarcliff Parkway was extended approximately one-half mile from Briarcliff Road to North Oak Trafficway. The improvements consisted of reconstruction of the roadway to unique parkway standards with all the amenities. To minimize the negative effects to the adjacent property owners, the right-of-way was reduced to absolute minimum to allow construction of two lane facilities with curb, gutters, and sidewalks on the north side. A new waterline was constructed and all other utilities were placed underground.

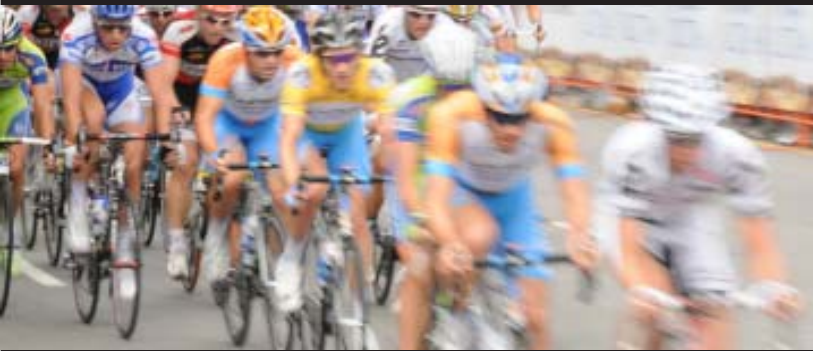
Additional amenities consisted of a landscaped island at Briarcliff and Grand Avenue, Gateway Sculptured Neighborhood Markers at both ends of the project, a state-of-the-art modular block retaining wall, special street lighting fixtures, and

tree plantings throughout the length of the project. The one-half mile project was completed in September of 2009.

Two lanes of Shoal Creek Parkway were constructed from North Woodland Avenue east to North Olive. The 700 feet of improvements included grading, storm drainage, curb and gutters, sidewalks, asphalt paving, and street lights.

Additional improvements on Shoal Creek Parkway included construction of 4-lanes from Clubhouse to Northeast 96<sup>th</sup> Street and round-a-bout construction at the intersection of Northeast 96<sup>th</sup> Street and Shoal Creek Parkway. This included construction of two Con Span bridges, grading, storm drainage, curb, gutters, sidewalks and trails, asphalt paving, and street lights. The project length was 4,720 feet.





# special events

- weekends**  
Car Free Weekends on Cliff Drive
- march 6**  
Do Not Feed the Geese Sign Planting
- march 10-13**  
MO Parks and Recreation Assoc. Conference hosted by KC Parks
- march 14**  
Brookside St. Pat's Warm-Up Parade
- march 17**  
St. Patrick's Day Parade on Broadway
- march 21**  
Day of Play! at all Community Centers

- march 21**  
KC North Community Center 50th Anniversary
- march 21**  
Ethnic Enrichment Commission Diplomatic Ball
- march 26-29**  
Flower, Lawn & Garden/Home Show
- march 31**  
Master Gardeners Demonstration Garden Groundbreaking at Southeast Community Center
- april 4**  
Project Blue River Rescue in Swope Park

- april 14**  
National Sports Center for the Disabled (NSCD) Wizards Soccer Camp
- april 25-26**  
Chalk Walk on The Concourse
- april 30**  
Zoo Tropics Ribbon Cutting and Opening
- may 2**  
Arbor Day Planting in Loose Park
- may 6**  
KC Parks Employee Departmental Service Awards Breakfast
- may 9**  
Earth Day Earth Fest in Theis Park

- may 14, 21, 28**  
Thimble Thursday Concerts in Garment Park
- may 16**  
NSCD Basketball Camp
- may 16-october 17**  
KC Organics and Natural Market
- may 16**  
Women on Wheels Bicycle Expo in Swope Park
- may 16-17**  
National Center for Indigenous American Cultures Pow Wow at Line Creek Community Center

- may 20-october 1**  
Downtown Farmers Market in Ilus Davis
- may 21**  
Hollywood: Take Your Dog to the Movie Night in Penn Valley
- may 23**  
Celebrate Urban Birds at Lakeside Nature Center
- may 26**  
Memorial Day at Liberty Memorial
- June-september**  
Movies in the Park
- June 2**  
Women's Leadership Fountain Dedication
- June 6**  
National Trails Day

- June 7**  
Rose Day at Loose Park Garden Center
- June 7**  
Cancer Survivors Rally & Park Rededication
- June 13**  
Mayor's Night Hoops Summer Tip Off
- June 13**  
Dragon Boat Festival on Brush Creek
- June 16-July 5**  
Heart of America Shakespeare Festival in Southmoreland
- June 16-17**  
NSCD Golf and Baseball Camps
- June 22**  
Family Swim Party at The Springs

- June 28**  
Children's TLC Duck Derby on Brush Creek
- July 1-31**  
National Parks and Recreation Month
- July 3, 10, 17 and 24**  
Hyde Park Children's Film Festival
- July 10-12**  
US Tennis Assoc. National Husband & Wife Hard Court Tennis Tournament
- July 11**  
Party in the Park
- July 11-september 11**  
Swope Park, A Photographic Essay by Paul McMillian Exhibit at Southeast Community Center

- July 15**  
Moon Glow Madness Swim Party at the Springs
- July 16-august 29**  
Mayor's Night Kicks Tournament
- July 17-19**  
World Team Tennis National Qualifier at Plaza Tennis Center
- July 27-august 1**  
2009 PDGA Disc Golf World Championships
- August 7**  
Polar Bear Exhibit Groundbreaking
- August 13-14**  
NSCD Family Fun Nights at Camp Lake of the Woods





**august 21-23**  
30th Annual Ethnic Enrichment Festival

**august 22**  
Westport Roanoke Community Center Grand Re-Opening

**august 25**  
USA Swim Make A Splash Breakfast at Gregg Klice

**august 29**  
Concert in Jarboe Park

**september 4-6**  
KC Irish Fest in Washington Square Park

**september 6**  
Concert in Troost Park

**september 9**  
810 Sports Radio Dippin' Dogs Swim Party at The Springs

**september 14**  
Gates/Enshriner's Golf Tournament at Swope Memorial Golf Course

**september 13**  
Tour of Missouri Stage 7 and Health Expo in Washington Square Park

**september 16**  
Kansas City Beautiful Awards at Liberty Memorial

**september 19**  
Zoo Run

**september 19-20**  
Kansas City Cup at Camp Lake of the Woods

**september 24**  
NSCD Golf Classic

**october 1-11**  
KC Cancer Center Pink Fountains

**october 2-4**  
US Tennis Assoc. Missouri Valley Outdoor Tennis Tournament at Plaza Tennis Center

**october 3-4**  
KC Indian Art Market & Cultural Festival

**october 6-november 17**  
Dog Park Open Houses

**october 9-10**  
Magic Woods at Lakeside Nature Center

**october 10**  
Harvest Festival at Shoal Creek Living History Museum

**october 17**  
Kansas City Marathon

**october 17**  
Fox Hollow Trail Run at Lakeside Nature Center

**october 24**  
WaterFire Kansas City on Brush Creek

**november 1**  
The Cliffhanger Run on Cliff Drive in Kessler Park

**november 2**  
Be Bright at Night in the Loose Park Rose Garden

**november 7**  
The Wilderness Run at Shoal Creek Living History Museum

**november 11**  
Veterans Day Observances at Liberty Memorial and Vietnam Veterans' Memorial

**november 21**  
Turkey Bowl at Line Creek Community Center

**december 4**  
Senior Holiday Luncheon

**december 4**  
NOEL at Bruce R. Watkins Cultural Heritage Center

**december 4**  
Santa's Wonderland in Gillham Park

**december 5**  
HOLIDAZZLE at Bruce R. Watkins Cultural Heritage Center

**december 5**  
Santa's Wonderland in Penguin Park

**december 5**  
A Visit from Saint Nicholas at Shoal Creek Living History Museum

**december 6**  
Santa's Wonderland in Barry Road Park

**december 5, 8, 11, 12, 19, 22**  
Youth Holiday Parties

**december 11**  
Santa's Wonderland at The Parade

**december 12**  
Kris Kringle 5K Run

**december 12**  
Santa's Wonderland in Swope Park

**december 13**  
Paws Meet Claus at Penn Valley Off-Leash Dog Park

**december 13**  
Santa's Wonderland at Longview Tract

**december 16**  
KC Parks Employee City Service Awards Breakfast

**december 19**  
Skate with Santa at Line Creek Ice Arena

**december 26-31**  
Celebration of Kwanzaa





# completed projects

## Construction Projects

The Black Archives of Mid-America Kansas City at 17<sup>th</sup> Terrace & Woodland  
 Maplewoods Parkway Phase IIA  
 Cliff Drive Restoration Phase II  
 Longview Tract Excavation  
 Winner Park Shelter  
 2007 Pedestrian Lighting & Electrical Package  
 2009 Water Access Plan  
 Shelter Plan for Troost Lake & The Grove  
 Searcy Creek Parkway Project  
 Shoal Creek Parkway Section A  
 Shoal Creek Parkway, Club House to 96<sup>th</sup> Street  
 Briarcliff Parkway, Briarcliff Road to North Oak  
 Murray Davis Park Improvements  
 Linwood Boulevard from Paseo to Forest  
 Waterwork Park Entrance Road  
 Swope Memorial Drive near Clubhouse  
 Sidewalks leading to Northland Fountain

Sidewalk and slope repair, 5127 Swope Pkwy.  
 San Rafael Park Trail  
 Ashland Park Walkway Improvements  
 Sycamore Park Trail  
 Loose Park Lake Renovations  
 Loose Park Main Garden Renovations  
 Indian Creek Greenway Trail from 99<sup>th</sup> Holmes to Lydia Avenue  
 Tiffany Springs Baseball Complex, Infield Improvements

## Planning and Master Plans

Longview Tract Master Plan  
 Highland View Park Master Plan  
 Hibbs Park Master Plan  
 Longview Tract Excavation Package  
 Longview Tract Site and Buildings Package  
 Cliff Drive Maintenance Trail  
 Playground Replacement Council District 3  
 Tiffany Springs Off Road Vehicle Plan  
 Spring Valley Park Master Plan

San Rafael Park Master Plan  
 Ivanhoe Park Master Plan  
 Grant Funded Projects  
 Cliff Drive Interpretation Phase 2 – National Scenic Byways Organization / MoDOT  
 Cliff Drive Restoration Phase 2 – Transportation Enhancement / MoDOT  
 Santa Fe Trail – National Park Service  
 Amity Woods Nature Park – Platte County  
 Outreach Grant/grant match Friends of Amity Woods Nature Park

## Monuments and Fountains Conservation

American Legion Memorial / Rogers Art Conservation / (KC-GO)  
 Adam and Eve Fountains Conservation Analysis  
 Venetian Wall Relief Conservation Analysis  
 Major Murray Davis Monument Restoration  
 Women's Leadership Fountain, Meyer Memorial & Fitzsimons Memorial Restoration

## Boulevard Curbs and Sidewalks

Rockhill Road from 65<sup>th</sup> to Locust  
 Meyer Boulevard from Main to Wornall Road  
 Ward Parkway from 76<sup>th</sup> Street to 79<sup>th</sup> Street  
 Linwood Boulevard from Paseo to Forest.  
 Waterwork Park Entrance Road  
 Swope Memorial Drive, near clubhouse  
 Sidewalks leading to Northland Fountain  
 Sidewalk and slope repair 5127 Swope Parkway  
 Ward Parkway curb repair from 76<sup>th</sup> St. to 79<sup>th</sup> St.

## Parking Lots

2007 Parking Lot Improvements  
 Anita Gorman Park Parking Lot

## Stone Wall & Stair Repairs

51<sup>st</sup> & Brookside Stone Wall Repair  
 Garrison Community Center Stone & Stair Repair  
 Southmoreland Stone Wall Repair

## Tennis Courts

Plaza Tennis Court Repair

## Facility Maintenance and Repairs

Hodge Park Entrance Road Repair  
 Kansas City North Community Center Gym Roof Replacement  
 Meyer & Wornall Marker Repair  
 Zoo Roof Package #6  
 Tiffany Springs Park Ballfield  
 2008 Water Access Plan  
 Gillham Park Trail Restoration  
 Jarboe Park Bath House, Pool & Fencing Restoration  
 Swope Park Pool Bath House Floor  
 Bruce R. Watkins Drive Bridges Repair  
 Westport-Roanoke Window Replacement

## Acquisition

Easements and Properties along Indian Creek and Blue River Greenway  
 San Rafael Park  
 Sunset Park

# parks partners

*Kansas City Parks and Recreation has formal partnerships established with neighborhood, community, business and not-for-profit organizations. These partnerships allow our department to leverage resources and generate city-wide interest and support for our system facilities, programs and events.*

- Black Archives of Mid-America Inc.
- Blue River Watershed Association
- Blue Valley Neighborhood Association
- Boys & Girls Club
- Broadway/Westport Council
- Brookside Business Association
- Brooksiede Roller Hockey
- Brookside Soccer
- Brush Creek Community Partners
- Budd Park Committee
- Carpenters Union of Kansas City
- Center School District
- Center Planning
- Chameleon Arts and Youth Development Theatre
- Chaumiere Neighborhood Association
- Children's Mercy Family Health Partners
- Children's Mercy Hospital
- City of Fountains Foundation
- Clay County Parks and Recreation Dept.
- Clay County Parks Partners Committee
- Clay County Veterans Memorial Committee
- Clay-Platte Baseball League Inc.
- Cliff Drive Scenic Byway Corridor Management Committee
- Dogpark Improvement Group (DIG)
- Downtown Council of Kansas City, MO
- Earth Riders Trail Association (ERTA)
- Economic Development Corporation
- Eitas Development Disability Services
- The Enshriners
- EPIC Entertainment
- Ethnic Enrichment Commission
- Federal Reserve Bank
- First Tee of Greater Kansas City

- Friends of Amity Woods Nature Park
- Friends of Bruce R. Watkins Cultural Heritage Ctr.
- Friends of Lakeside Nature Center
- Friends of Penn Valley Park
- Friends of the Zoo (FOTZ)
- Friends of Riverfront Park
- From Glory to Glory Inc.
- Full Employment Council (FEC)
- Garden Center Association
- Garrison Community Center Youth Advisory Board
- Gillham Road Advisory Committee
- City of Gladstone Parks and Recreation
- Golden Oaks Neighborhood Association
- Gracemor Randolph Neighborhood Association
- Guadalupe Center Inc.
- Heart of America Council/Boy Scouts
- Heart of America Shakespeare Festival
- Hickman Mills School District of Greater Kansas City
- Hills of Walden Home Owners Association
- Hispanic Football Soccer Association
- Historical Society of New Santa Fe Trailside Center
- Home Builders Association of Greater Kansas City
- Jackson County Parks and Recreation
- Jazz District Redevelopment Corporation
- Just Off-Broadway Theater
- Kansas City Art Institute
- Kansas City Community Gardens
- Kansas City Convention & Visitors Association
- Kansas City Cricket Club
- Kansas City Flying Disc Club
- Kansas City, Missouri Police Department (KCPD)
- Kansas City, Missouri School District
- Kansas City Museum at Corinthian Hall
- Kansas City Northern Railroad Inc.
- Kansas City Organics & Natural Market
- Kansas City Pop Warner Football
- Kansas City Rose Society
- Kansas City Royals
- Kansas City Rugby
- Kansas City United Tennis
- Kansas City Vietnam Veterans Memorial
- Kansas City Wellness Network

- Kansas City WildLands
- Kansas City Wizards/On Goal
- KC Ice
- KC North Community Center Advisory Board
- KCPD Mounted Patrol
- KCWE Channel 29
- KPRS Hot 103 JAMZ
- Kessler Society of Kansas City
- Liberty Memorial Association
- Lykins Neighborhood Association
- Martin City CID
- MAST Ambulance
- Mid-America Regional Council (MARC)
- Mid-Continent Public Library
- Mill Creek Association
- Missouri Department of Conservation
- Missouri Department of Natural Resources
- Missouri Department of Transportation
- Missouri Highway & Transportation Commission
- Missouri Parks & Recreation Association
- Monnett Battle of Westport Fund Inc.
- Mosaic Brain
- Mountaintop Inc.
- National Center for Indigenous American Cultures at Line Creek Inc. (NCIAC)
- National Recreation & Parks Association
- National Sports Center for the Disabled (NSCD)
- Noble Homes Association
- North Kansas City Area Baseball Association
- North Kansas City School District
- North Suburban Youth Football League
- Northeast Inter Soccer League Boosters
- Northern Knights
- Northland Community Alliance
- Northland Girls Softball
- Northland Neighborhoods Inc.
- Northland Parks Committee
- Northland Planning and Development Committee
- Northland Regional Chamber of Commerce
- Northland Rugby Football Club
- Northland Sports Alliance dba SPCAA
- Optimist Athletic Association
- Park Hill High School Tennis

- Park Hill School District
- Pendleton Heights Neighborhood
- Platte County Convention & Visitors Bureau
- Platte County Parks and Recreation
- Platte County Parks Partners
- Platte County Trails Coordination Committee
- Plaza Rotary Club
- Police Athletic League (PAL) Blue Valley
- Port Authority of Kansas City, Missouri
- Riverfront Heritage Trail
- Rockhill Homes Association
- Ronald McDonald House Charities
- Scarritt Renaissance Neighborhood Association
- Sheffield Neighborhood Association
- Shoal Creek Association
- The Sierra Club
- Sister City Association
- Society for Friendship with China
- South Kansas City Chamber of Commerce
- Southeast Community Center Advisory Board
- Southern Community Coalition
- Southtown Council
- Starlight Theatre Association
- StoneLion Puppet Theatre
- St. Pius X High School
- The Ali Kemp Educational (T.A.K.E.) Foundation
- Tiffany Springs Parks Partners
- 3 – Trails CID
- 3 & 2 Baseball
- Tony Aguirre Community Center Advisory Committee
- Tour of Missouri Local Organizing Committee
- University of Missouri, Kansas City
- Union Cemetery Historical Society
- Union Station
- Verona Hills Homes Association
- Vietnam Veterans of America
- Vivion Road Gang, Chapter 317
- Waldo Area Business Association
- Ward Family Foundation
- Ward Parkway Homes Association
- The Whole Person
- Winwood-Sunnybrook Neighborhood Association



# awards

- **All America Rose Selections Committee Certificate of Achievement for Outstanding Maintenance**  
Laura Conyers Smith Municipal Rose Garden
- **Arbor Day Foundation: Tree City USA**  
City of Kansas City, Missouri-21 years
- **Economic Development Council Cornerstone Award-Public Projects**  
Southeast Community Center in Swope Park-Finalist
- **Environmental Achievement Award**  
Birmingham Farms Bio-Solid Treatment Facility Tree Nursery
- **Historic Kansas City Foundation Preservation Award**  
Women's Leadership Fountain
- **Dr. George Ehrlich Achievement in Preservation**  
Parade Park Maintenance Building/Black Archives
- **Ingram's Magazine "Best of Business" KC Best Charitable Event: Jazzoo, #1**  
**Best Theater: Starlight Theatre, #2**
- **Best Family Outing Venue: Kansas City Zoo, #1**
- **Best Museum or Gallery: National World War 1 Museum at Liberty Memorial, #3**
- **Best Performing Arts Venue: Starlight Theatre, #1**
- **Missouri Park & Recreation Association Not-for-Profit Citation Award**  
Shoal Creek Association
- **Missouri Recreation and Parks Hall of Fame**  
Frank Vaydik Sr., former Director
- **Fellow Award**  
Mark L. McHenry, Director
- **National Recreation and Park Association Commission for Accreditation of Park and Recreation Agencies**  
Kansas City, Missouri Parks and Recreation  
10 year reaccreditation renewal
- **Visitors' Choice Awards Favorite Performing Arts Venue**  
Starlight Theatre
- **Favorite Kids Attraction**  
Kansas City Zoo

3,175,069

Total participation  
All programs, events & admissions

834,412

Event Attendance

277

Number of Events

Volunteers

Number of volunteers: 7,900  
Volunteer hours: 641,200  
Estimated value: \$12,984,300

Admissions

Kansas City Zoo: 544,316  
WWI Museum: 140,251  
Starlight Theatre: 232,001  
Bruce R. Watkins: 12,565  
Loose Park Garden Center: 12,838

Forestry

Trees trimmed: 8,438  
Trees removed: 2,839  
Stumps removed: 1,797

19,530

Total acreage mowed

# measurements

623,721

Youth participation  
All facilities and programs

475,899

Customer participation  
Community Centers

122,144

Customer participation  
Pools and Spraygrounds

176,922

Customer participation  
Athletic Facilities and Programs

4,516

Citizens 3-1-1 Action Center  
Requests Resolved

2,327

Graffiti incidents removed

Maintenance\*

Athletic field : 8,240  
Landscape : 36,598  
Park repairs: 18,071  
Special event preparation: 7,435  
Litter/trash removal: 65,949

\*Hours worked

- **s.h.a.p.e.** (Safe, Healthy, Attractive, Public Environments) provides up-to-date information on the overall conditions of our parks and facilities.
- Inspectors rate and report conditions immediately. In 2009:
- 1409 park inspections conducted
- 190 park sites involved
- **park acceptability rating=87%**
- 171 facility inspections conducted
- 21 facilities involved
- **facility acceptability rating=91%**



# officials

L-R: Aiken, Fierro, Stackhaus, Webster, Conger

## BOARD OF PARKS AND RECREATION COMMISSIONERS

John Fierro, *President*

Tyrone Aiken; Meghan Badwey Conger; Aggie Stackhaus, Ajamu K. Webster

## MAYOR

Mark Funkhouser

## CITY COUNCIL

Deb Hermann, *First District-At-Large*

Bill Skaggs, *First District*

Ed Ford, *Second District-At-Large*

Russ Johnson, *Second District*

Melba Curls, *Third District-At-Large*

Sharon Sanders Brooks, *Third District*

Beth Gottstein, *Fourth District-At Large*

Jan Marcason, *Fourth District*

Cindy Circo, *Fifth District-At-Large*

Terry Riley, *Fifth District*

Cathy Jolly, *Sixth District-At-Large*

John A. Sharp, *Sixth District*

## history

In the late 19th century, Kansas City had few paved streets and even fewer sidewalks, but the town was booming. As the population continued to grow and the city land size increased, the main focus remained on commerce and building places for people to live and work. There was, however, a group of citizens who saw the need for creating a better quality of life and improving the city's appearance through the development of municipal parks, and later, a boulevard system.

The fledgling park movement continued to gather momentum until one of its firmest supporters, William Rockhill Nelson, moved to town and took up the cause. As the editor of the evening newspaper, *The Star*, Mr. Nelson used his position to campaign for paved roads and streets. He also advocated for improved sidewalks and sewers, decent public buildings, better streetlights, and more fire and police protection. His most enduring legacy, however, was the city's park and boulevard system which he promoted with August Meyer, local businessman and president of the 1892 Park Board, predecessor to the Board of Parks and Recreation Commissioners. The Park Board hired landscape architect George E. Kessler to design a boulevard and park system master plan that would provide for a "city within a park."

Work on the boulevard system began in 1893 with the development of Independence and Gladstone Boulevards. Acquisition of properties began in earnest when, in 1895, the city approved a charter amendment to give the Park Board power to condemn land, issue bonds and receive special taxes. North Terrace Park (now Kessler Park), West Terrace Park and later Penn Valley Park were among the first developments. A milestone was achieved with a gift of property from Col. Thomas H. Swope, a pessimistic "knocker" of the parks plan. In 1896, Swope deeded to the city more than 1,300 acres, which became the park that bears his name and the largest park in the system. Another important gift to the city was that of Loose Park in 1927, donated by Ella Loose in memory of her husband, Jacob.

Since then, hundreds of additional parks and boulevards have been developed throughout the greater Kansas City area. In 1967, the Park Department and Recreational Division of the city's Welfare Department were combined into the present-day Kansas City Parks and Recreation Department. Thanks to the foresight of city leaders and advocates, Kansas City is internationally known for its beautiful parks and boulevards system. Today's Parks, Recreation and Boulevards Department honors the past while continuing to grow and make improvements for the future.





**Kansas City, Missouri Parks and Recreation**

4600 East 63rd Street

Kansas City, Missouri 64130

816-513-7500

[www.kcmo.org/parks](http://www.kcmo.org/parks)

