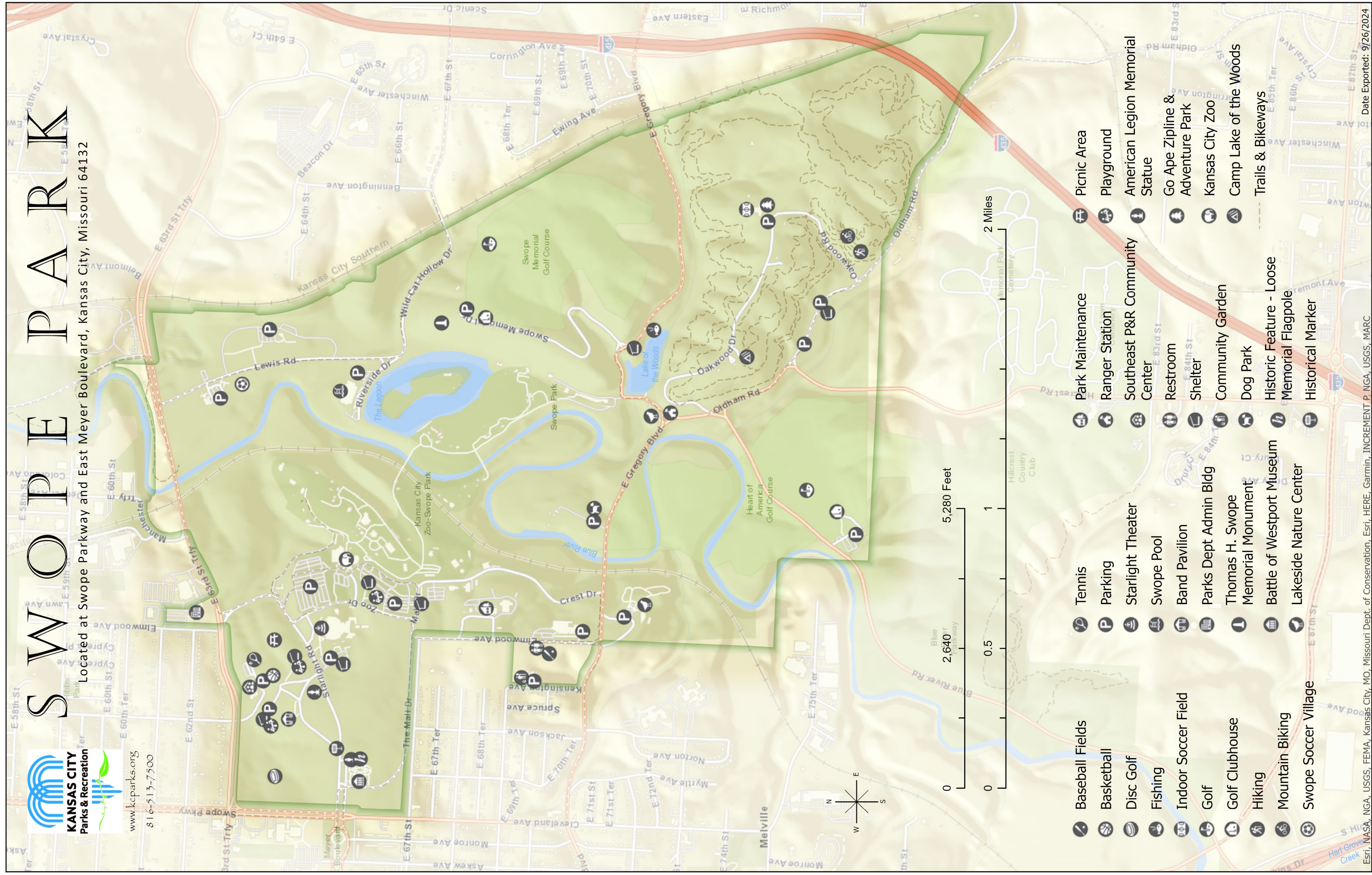




SWOPE PARK

Located at Swope Parkway and East Meyer Boulevard, Kansas City, Missouri 64132

www.kcparks.org
816-513-7500



- Baseball Fields
- Basketball
- Disc Golf
- Fishing
- Indoor Soccer Field
- Golf
- Golf Clubhouse
- Hiking
- Mountain Biking
- Swope Soccer Village
- Tennis
- Parking
- Starlight Theater
- Swope Pool
- Band Pavilion
- Parks Dept Admin Bldg
- Thomas H. Swope Memorial Monument
- Battle of Westport Museum
- Lakeside Nature Center
- Park Maintenance
- Ranger Station
- Southeast P&R Community Center
- Restroom
- Shelter
- Community Garden
- Dog Park
- Historic Feature - Loose Memorial Flagpole
- Historical Marker
- Picnic Area
- Playground
- American Legion Memorial Statue
- Go Ape Zipline & Adventure Park
- Kansas City Zoo
- Camp Lake of the Woods
- Trails & Bikeways